

| General Notes | | Steel Grades | | Design Notes & Structural Members | | | |
|------------------|--|---|--|-----------------------------------|---------------------------------|--|--|
| G01 | The Design and Details shown in these Drawings are applicable to this Project only. | 300 PLUS | Universal Beams & Columns, Parallel Flange Channels, Large Angles to AS/NZS3679.1 | Building Class | 10a - Importance Level 2 | | |
| G02 | These Drawings shall be read in conjunction with all Architectural Drawings, other Consultants' Drawings, Specifications and such other Written Instructions as may be issued during the course of the Project. Any discrepancy shall be referred to the Engineer before proceeding with the work. | 250 | Flats, Small Angles, Taper Flange Beams & Columns to AS/NZS3679.1 | Design Wind Speed | 40.95 m/s | | |
| G03 | All Materials and Workmanship shall be in accordance with the relevant and current SAA Codes and Authorities Except where varied by the Project Specifications. | 300 | Welded Sections to AS/NZS3679.2 | Columns | C20019 & C25024 | | |
| G04 | The Structure must be maintained in a stable condition and no part must be overloaded during construction. Temporary bracing must be designed and provided by the contractor(s) to keep the building works and excavations stable at all times. | 250 | Hot Rolled Plates, Floor Plates & Slabs to AS/NZS3678 | Rafters | C20019 & C25024 | | |
| G05 | The Issuer of these Designs reserves the right to alter Specifications and Designs as it may see fit without prior notification or penalty. | 250 | Hollow Sections to AS1163. Circular Sections less than 165mm Outside Diameter. Sections other than the above | Eave Purlins | C15012 | | |
| G06 | The Structure has not been designed for snow loads. | G450-G550 | Cold Form AS4600. Unless noted otherwise, all purlins, plates & brackets are G450. | Purlins | Z15012 | | |
| G07 | Connections may require on-site drilling by the contractor(s). | G500 | Slab mesh and deformed reinforcement bars. | Girts | Z15012 | | |
| | | G2070 | AS2841. Galvanized Steel Wire Strand. Unless noted otherwise, all Cable Bracing is G2070. | Fly Bracing | G500 1.15 mm as per Detail | | |
| | | | | Bracing | G550 30 x 1 mm Strap | | |
| | | | | Plates & Brackets | Gauge as per Connection Detail. | | |
| | | | | Technical Data | Page 34 | | |
| | | Australian Standard™ & Australian/New Zealand Standard™ Adopted | | | | | |
| | | AS 1111.1 | ISO Metric Hexagon Bolts and Screws – Product Grade C Part 1: Bolts | | | | |
| | | AS/NZS 1163 | Cold-formed Structural Steel Hollow Sections | | | | |
| | | AS/NZS 1170.0 | Structural Design Actions - Part 0: General Principles | | | | |
| | | AS/NZS 1170.1 | Structural Design Actions - Part 1: Permanent, Imposed & Other Actions | | | | |
| | | AS/NZS 1170.2 | Structural Design Actions - Part 2: Structural Design, Wind Actions | | | | |
| | | AS/NZS 1170.4 | Structural Design Actions - Part 4: Earthquake Actions in Australia | | | | |
| | | AS 1252 | Structural Assemblies | | | | |
| | | AS/NZS 1554 | Structural Steel Welding | | | | |
| | | AS 2870 | Residential Slabs and Footings | | | | |
| | | AS 3600 | Concrete Structures | | | | |
| | | AS 4100 | Steel Structures | | | | |
| | | AS/NZS 4600 | Cold-formed Steel Structures | | | | |
| | | AS/NZS 4671 | Steel Reinforcing Materials | | | | |
| | | AS/NZS 4680 | Hot-dip Galvanized (Zinc) Coatings on Fabricated Ferrous Articles | | | | |
| | | Region & Site Details | | | | | |
| | | Suitable for Regions A0-5. TC2 without Shielding: Open terrain, including grassland, with well-scattered obstructions having heights generally from 1.5 m to 5 m, with no more than two obstructions per hectare, e.g. farmland and cleared subdivisions with isolated trees and uncut grass. | | | | | |
| | | $V_{design} = V_R \times M_c \times M_d \times (M_{z,cat} \times M_s \times M_i)$ $V_{design} = 45 \times 1 \times 1 \times (0.91 \times 1 \times 1) = 40.95 \text{ m/s}$ | | | | | |
| | | Site Description: Typical farmland or developing outer suburban areas. The building has no protection from wind in the immediate area. The site is not on the slope or crest of a hill, ridge or escarpment. | | | | | |
| | | Foundations have been designed assuming an allowable bearing capacity of 100 kPa, undrained cohesion $C_u = 50$ kPa. Concrete Strength = 25 MPa. | | | | | |
| Foundation Notes | | | | | | | |
| F01 | Foundations have been designed assuming an allowable bearing capacity of 100 kPa. | | | | | | |
| F02 | The Owner is advised to obtain a Geotechnical Report and/or Site Foundation Report to confirm F01 above. | | | | | | |
| F03 | Footings shall be located centrally under walls and columns unless noted otherwise. | | | | | | |
| F04 | All Footings to be founded a minimum of 400 mm into Natural Ground. Do not Found Footings in uncontrolled fill. | | | | | | |
| F05 | Engineer to be contacted if Foundation Conditions vary from F01 above. | | | | | | |
| Steelwork Notes | | | | | | | |
| S01 | All Workmanship and Materials shall be in accordance with AS 4100, AS/NZ 4600 and AS 1554 except where varied by the Project documentation. | | | | | | |
| S02 | Bolting Categories are identified on the Structural Drawings as follows: 4.6/S Commercial Bolts of Grade 4.6 to AS 1111 Snug Tightened 8.8/S High Strength Structural Bolts of Grade 8.8 to AS 1252 Snug Tightened | | | | | | |
| S03 | Unless noted otherwise, all M16 fasteners shall be Category 8.8/S. Standard Fixings for C100, C150, C200 and C250 Sections are M12 bolts. Standard Fixings for C300 and C350 Sections are M16 bolts. No Connection shall have less than 2 bolts. | | | | | | |
| S04 | All metal cladding should comply with AS/NZS 4680 G550, AZ150 (550 MPa minimum yield stress, 150 g/m2 minimum coating mass). | | | | | | |
| S05 | Steelwork intended to be concrete encased shall be unpainted. Encasing concrete shall be Grade N25 unless noted otherwise providing a cover adequate to suit fire rating or exposure conditions. Concrete Encasement shall be centrally reinforced with 5 mm wire to AS 4671 or 6 mm Structural Grade Bars to AS 4671 at 150 mm pitch. | | | | | | |
| S06 | Unless noted otherwise, all steel shall comply with the relevant Australian Standard. | | | | | | |



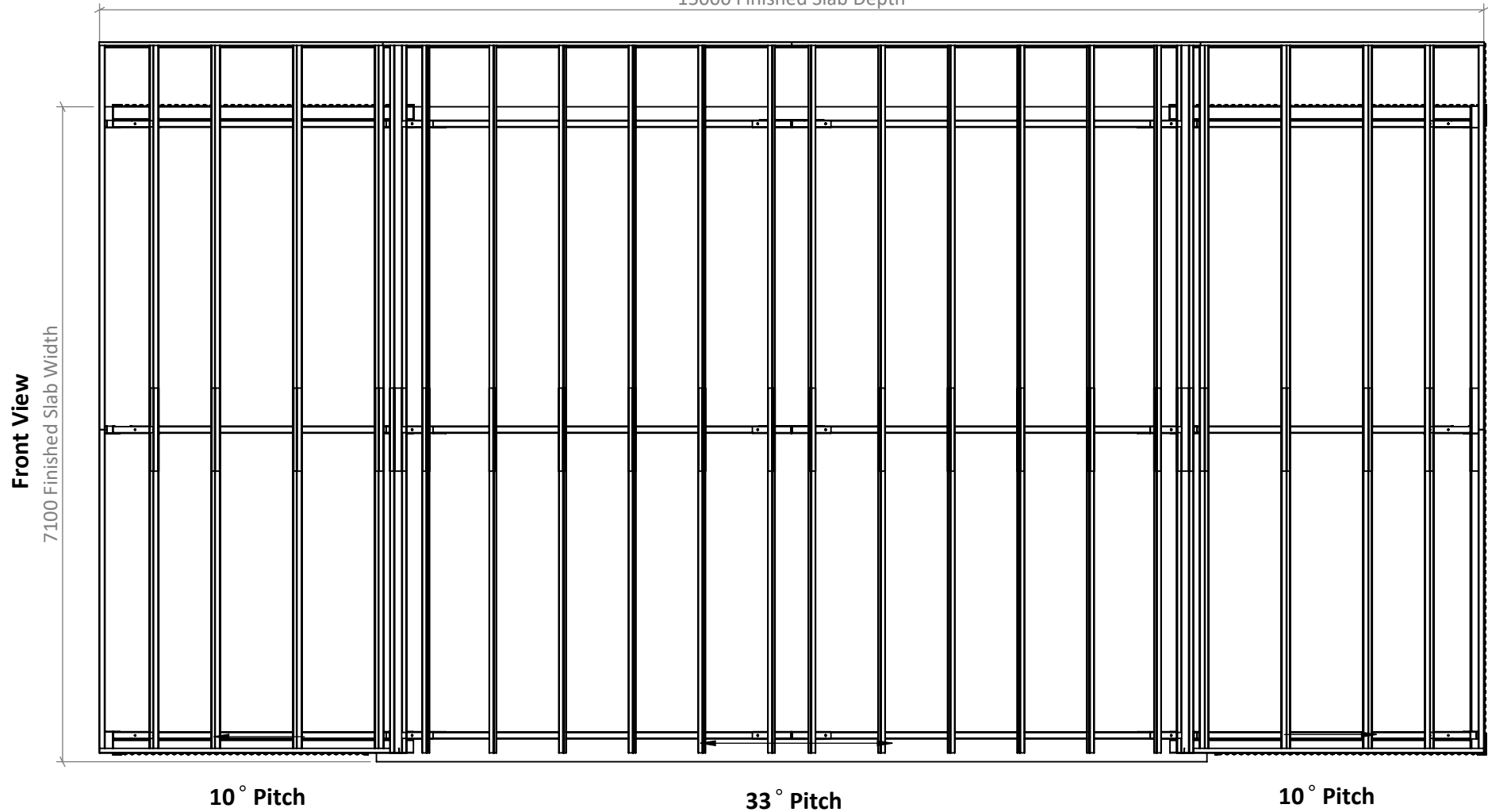
| | |
|---|-----------------------------------|
| PROJECT: Gable Shed & Awning | PROJECT NUMBER: 10557 |
| CLIENT: John Bonham - 0432 379 252 | DRAWN BY: dm3 Solutions |
| ADDRESS: 388 Laverstock Road, Yass NSW 2582 | DRAWN DATE: 2024-11-15 |

| | | | |
|---|--------------------|----------------------|-----------------------------------|
| © 2024 dm3 Solutions. The Information contained herein is Proprietary, Confidential and the Sole Property of dm3 Solutions. Reproduction in part or in whole is Prohibited without written approval. Unless specified otherwise, dimensions are in millimetres & drawings are not to scale. | | | |
| Powered by dm3Solutions.com | | | |
| ISSUE: 1 | SIZE: A4 | SCALE: NTS | DRAWING NUMBER: 1 of 34 |

50mm insulated Roof Panel by others & fix to Manufacturer's Specifications.

Left View

15000 Finished Slab Depth



Roof has been designed to support solar panels not exceeding 20 kg/m². Solar panels to be installed within roof areas and parallel to roof sheets.



**PROFESSIONAL
CHOICE**
SHEDS AND CARPORTS

| | |
|---|-----------------------------------|
| PROJECT: Gable Shed & Awning | PROJECT NUMBER: 10557 |
| CLIENT: John Bonham - 0432 379 252 | DRAWN BY: dm3 Solutions |
| ADDRESS: 388 Laverstock Road, Yass NSW 2582 | DRAWN DATE: 2024-11-15 |

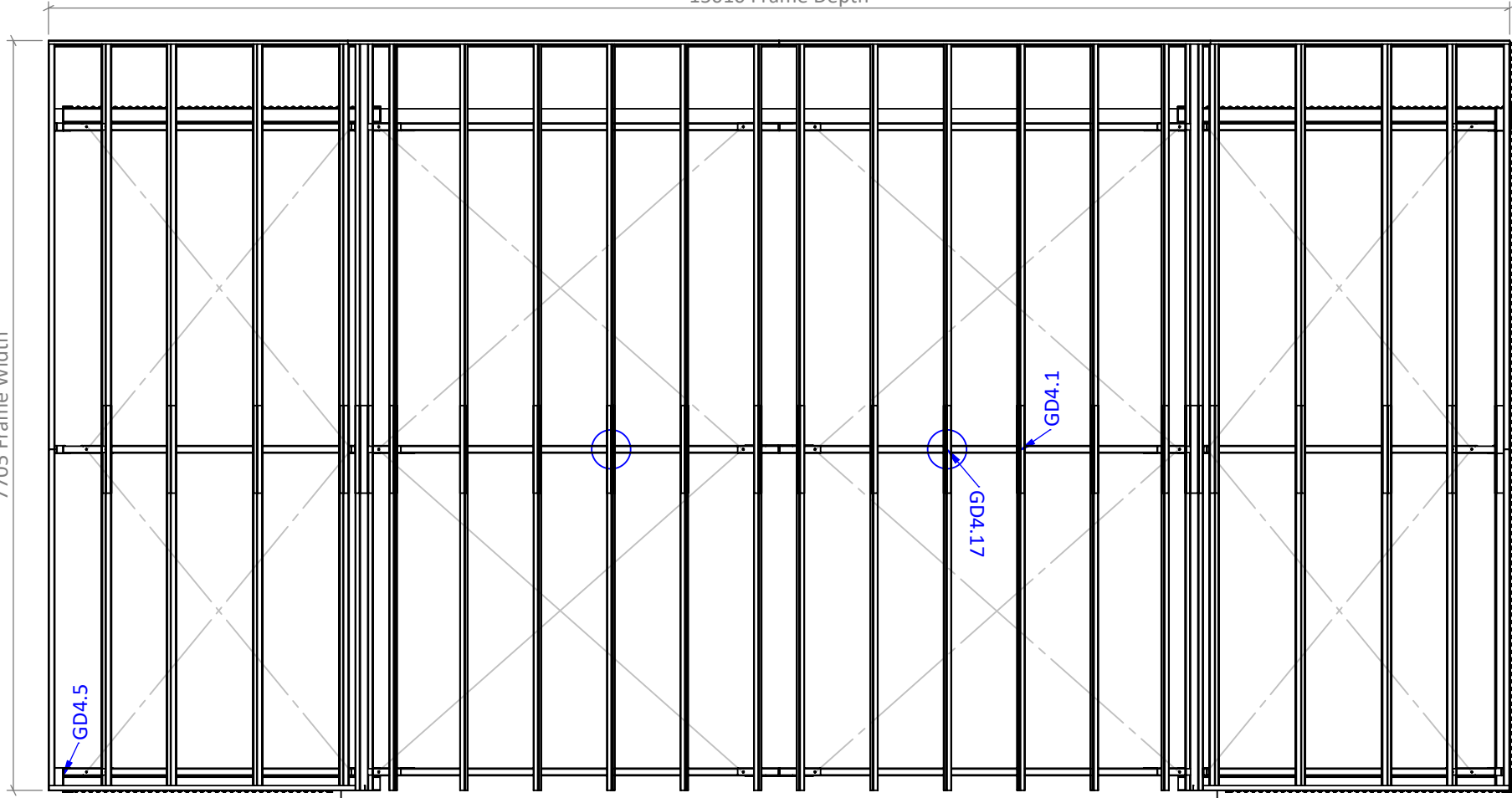
| | | | |
|---|--------------------|----------------------|----------------------------------|
| © 2024 dm3 Solutions. The Information contained herein is Proprietary, Confidential and the Sole Property of dm3 Solutions. Reproduction in part or in whole is Prohibited without written approval. Unless specified otherwise, dimensions are in millimetres & drawings are not to scale. | | | |
| Powered by dm3Solutions.com | | | |
| ISSUE: 1 | SIZE: A4 | SCALE: NTS | DRAWING NUMBER 2 of 34 |

Left Elevation

15010 Frame Depth

Front Elevation

7705 Frame Width



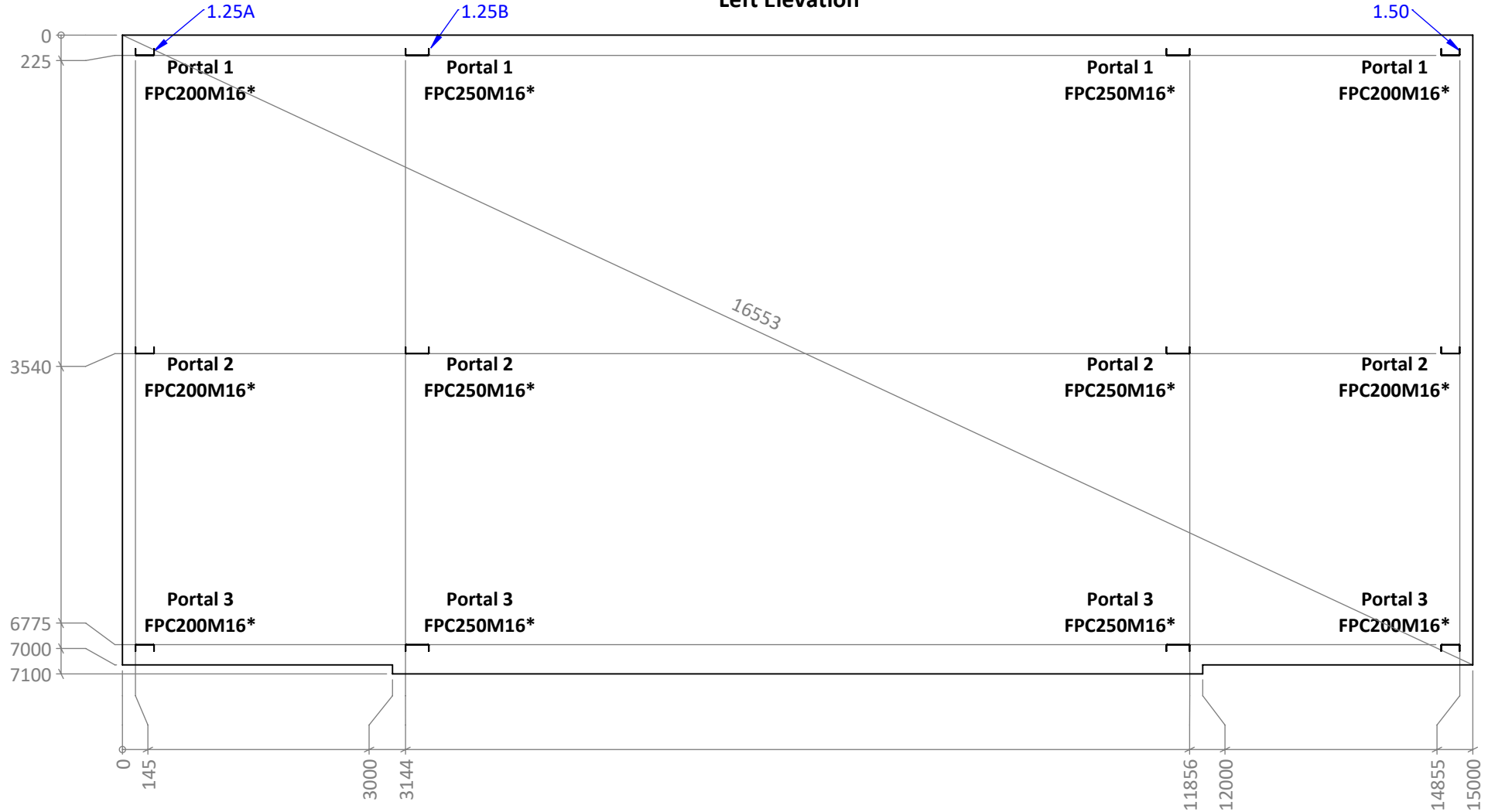
PROFESSIONAL CHOICE
SHEDS AND CARPORTS

| | |
|----------|------------------------------------|
| PROJECT: | Gable Shed & Awning |
| CLIENT: | John Bonham - 0432 379 252 |
| ADDRESS: | 388 Laverstock Road, Yass NSW 2582 |

| | |
|-----------------|---------------|
| PROJECT NUMBER: | 10557 |
| DRAWN BY: | dm3 Solutions |
| DRAWN DATE: | 2024-11-15 |

| | | | |
|---|-------|--------|----------------|
| © 2024 dm3 Solutions. The Information contained herein is Proprietary, Confidential and the Sole Property of dm3 Solutions. Reproduction in part or in whole is Prohibited without written approval. Unless specified otherwise, dimensions are in millimetres & drawings are not to scale. | | | |
| Powered by dm3Solutions.com | | | |
| ISSUE: | SIZE: | SCALE: | DRAWING NUMBER |
| 1 | A4 | NTS | 3 of 34 |

Left Elevation



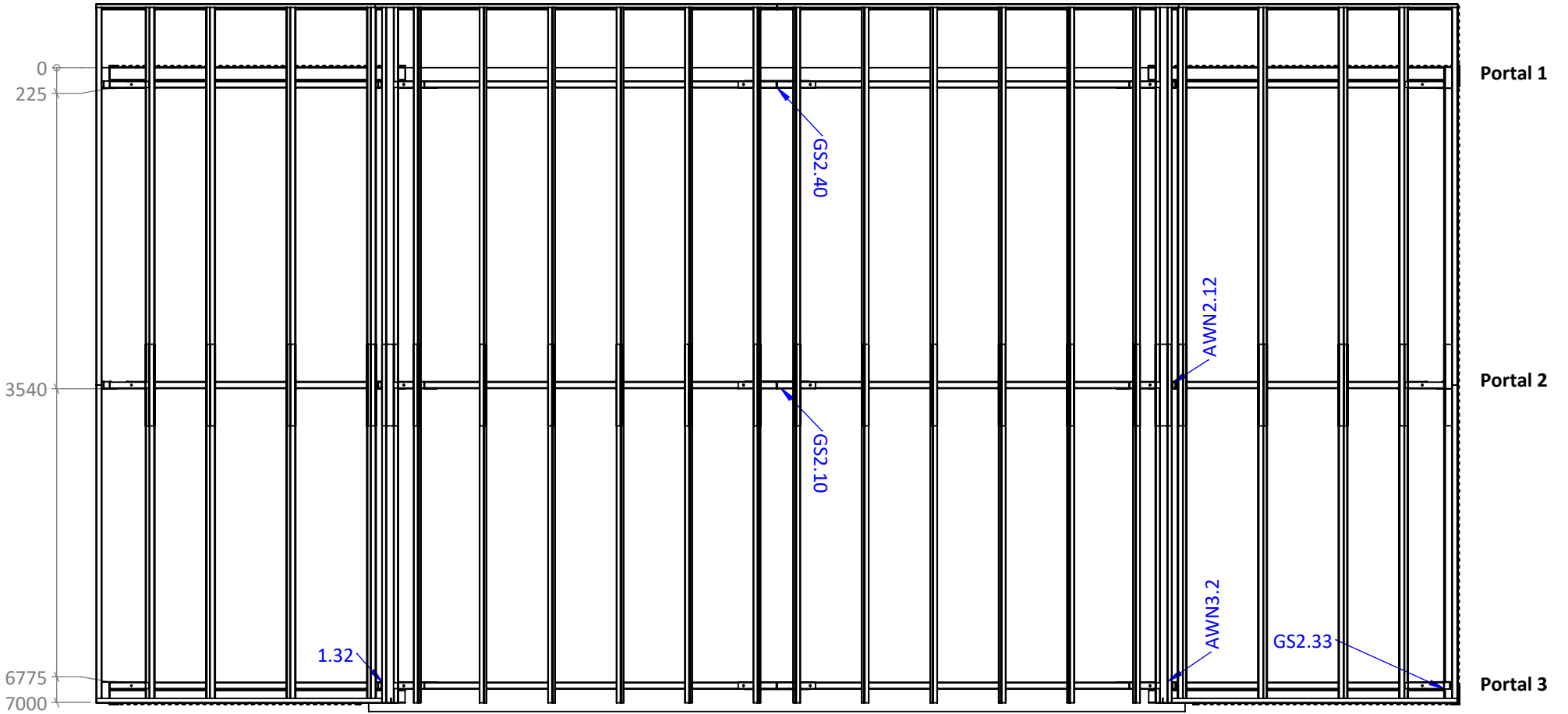
Note: Y coordinates are to the outer edge of the Footing Plate Web. X coordinates are to the outer edge of the Footing Plate Flange, closest to and parallel to the Slab edge.



PROFESSIONAL CHOICE
SHEDS AND CARPORTS

| | | | | | |
|---|-----------------------------------|---|--------------------|----------------------|----------------------------------|
| PROJECT: Gable Shed & Awning | PROJECT NUMBER: 10557 | © 2024 dm3 Solutions. The Information contained herein is Proprietary, Confidential and the Sole Property of dm3 Solutions. Reproduction in part or in whole is Prohibited without written approval. Unless specified otherwise, dimensions are in millimetres & drawings are not to scale. Powered by dm3Solutions.com | | | |
| CLIENT: John Bonham - 0432 379 252 | DRAWN BY: dm3 Solutions | ISSUE: 1 | SIZE: A4 | SCALE: NTS | DRAWING NUMBER 4 of 34 |
| ADDRESS: 388 Laverstock Road, Yass NSW 2582 | DRAWN DATE: 2024-11-15 | | | | |

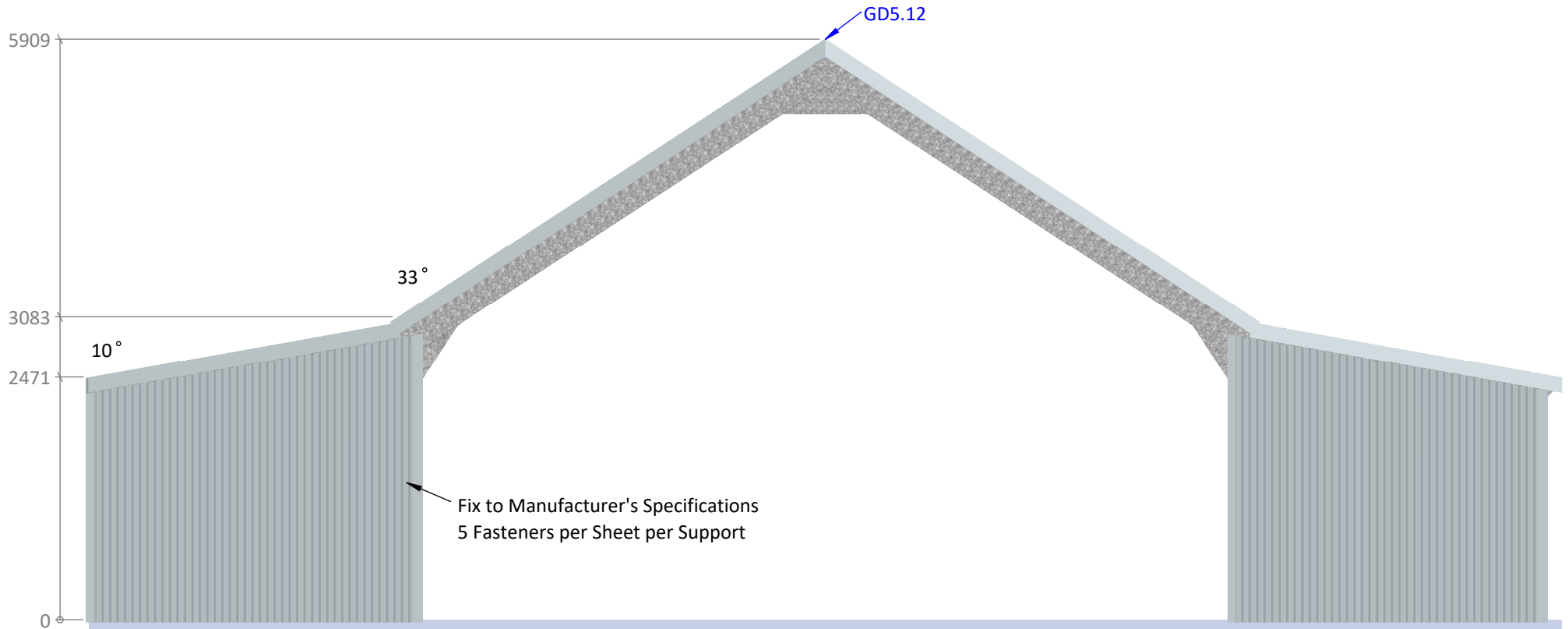
Left Elevation



Note: Y coordinates are to the outer edge of the Footing Plate Web. X coordinates are to the outer edge of the Footing Plate Flange, closest to and parallel to the Slab edge.

| | |
|---|-----------------------------------|
| PROJECT: Gable Shed & Awning | PROJECT NUMBER: 10557 |
| CLIENT: John Bonham - 0432 379 252 | DRAWN BY: dm3 Solutions |
| ADDRESS: 388 Laverstock Road, Yass NSW 2582 | DRAWN DATE: 2024-11-15 |

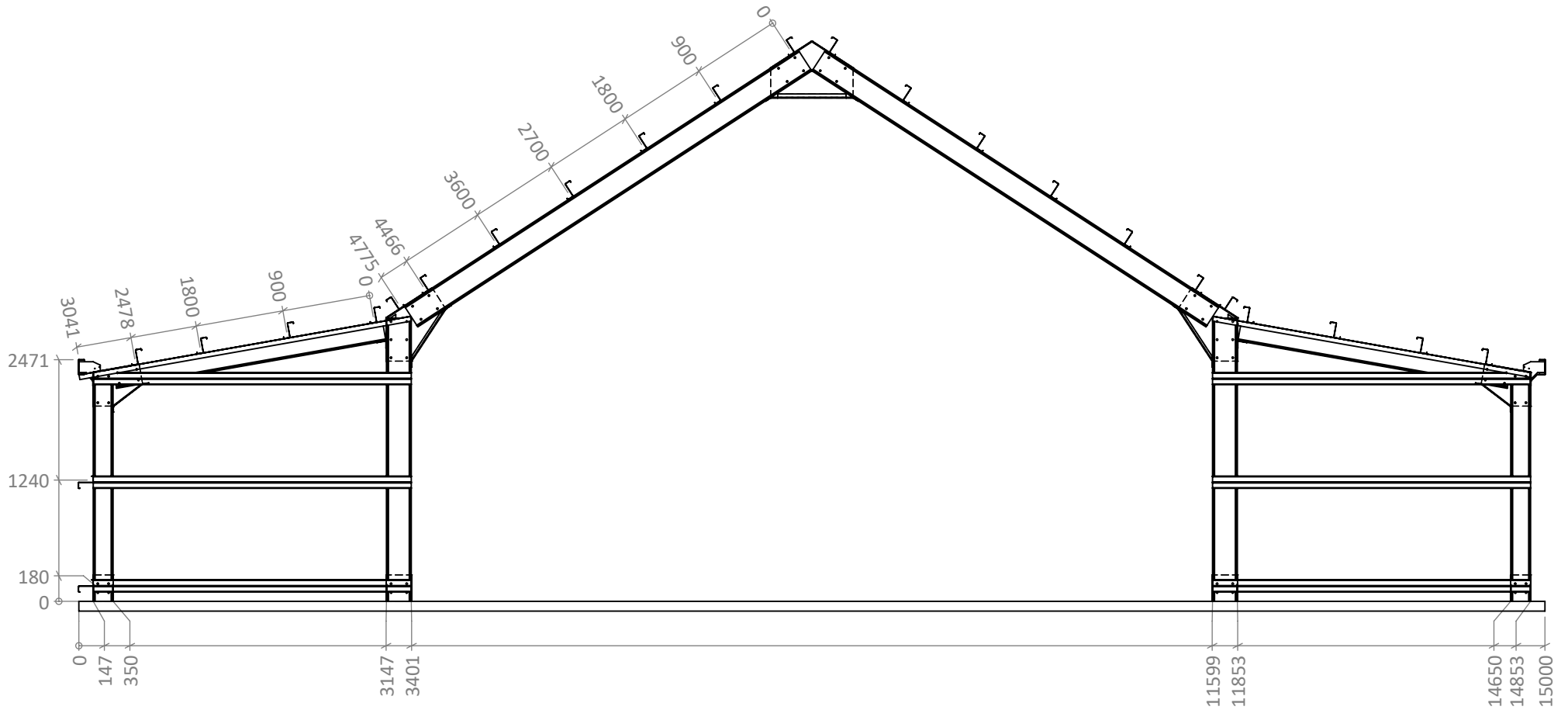
| | | | |
|---|--------------------|----------------------|----------------------------------|
| © 2024 dm3 Solutions. The Information contained herein is Proprietary, Confidential and the Sole Property of dm3 Solutions. Reproduction in part or in whole is Prohibited without written approval. Unless specified otherwise, dimensions are in millimetres & drawings are not to scale. | | | |
| Powered by dm3Solutions.com | | | |
| ISSUE: 1 | SIZE: A4 | SCALE: NTS | DRAWING NUMBER 5 of 34 |



**PROFESSIONAL
CHOICE**
SHEDS AND CARPORTS

| | |
|---|-----------------------------------|
| PROJECT: Gable Shed & Awning | PROJECT NUMBER: 10557 |
| CLIENT: John Bonham - 0432 379 252 | DRAWN BY: dm3 Solutions |
| ADDRESS: 388 Laverstock Road, Yass NSW 2582 | DRAWN DATE: 2024-11-15 |

| | | | |
|---|--------------------|----------------------|----------------------------------|
| © 2024 dm3 Solutions. The Information contained herein is Proprietary, Confidential and the Sole Property of dm3 Solutions. Reproduction in part or in whole is Prohibited without written approval. Unless specified otherwise, dimensions are in millimetres & drawings are not to scale. | | | |
| Powered by dm3Solutions.com | | | |
| ISSUE: 1 | SIZE: A4 | SCALE: NTS | DRAWING NUMBER 6 of 34 |



**PROFESSIONAL
CHOICE**
SHEDS AND CARPORTS

| | |
|----------|------------------------------------|
| PROJECT: | Gable Shed & Awning |
| CLIENT: | John Bonham - 0432 379 252 |
| ADDRESS: | 388 Laverstock Road, Yass NSW 2582 |

| | |
|-----------------|---------------|
| PROJECT NUMBER: | 10557 |
| DRAWN BY: | dm3 Solutions |
| DRAWN DATE: | 2024-11-15 |

| | | | |
|---|-------|--------|----------------|
| © 2024 dm3 Solutions. The Information contained herein is Proprietary, Confidential and the Sole Property of dm3 Solutions. Reproduction in part or in whole is Prohibited without written approval. Unless specified otherwise, dimensions are in millimetres & drawings are not to scale. | | | |
| Powered by dm3Solutions.com | | | |
| ISSUE: | SIZE: | SCALE: | DRAWING NUMBER |
| 1 | A4 | NTS | 7 of 34 |

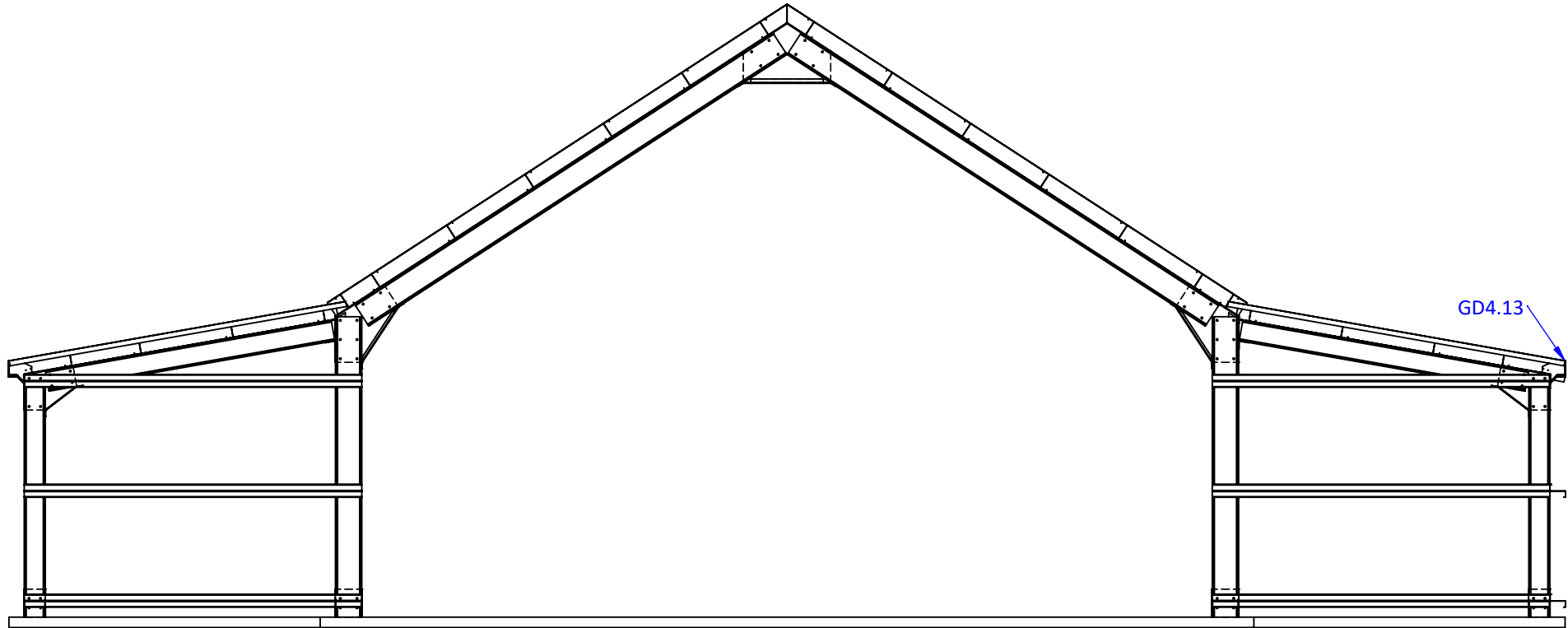


**PROFESSIONAL
CHOICE**
SHEDS AND CARPORTS

| | |
|----------|------------------------------------|
| PROJECT: | Gable Shed & Awning |
| CLIENT: | John Bonham - 0432 379 252 |
| ADDRESS: | 388 Laverstock Road, Yass NSW 2582 |

| | |
|-----------------|---------------|
| PROJECT NUMBER: | 10557 |
| DRAWN BY: | dm3 Solutions |
| DRAWN DATE: | 2024-11-15 |

| | | | |
|---|-------|--------|----------------|
| © 2024 dm3 Solutions. The Information contained herein is Proprietary, Confidential and the Sole Property of dm3 Solutions. Reproduction in part or in whole is Prohibited without written approval. Unless specified otherwise, dimensions are in millimetres & drawings are not to scale. | | | |
| Powered by dm3Solutions.com | | | |
| ISSUE: | SIZE: | SCALE: | DRAWING NUMBER |
| 1 | A4 | NTS | 8 of 34 |



**PROFESSIONAL
CHOICE**
SHEDS AND CARPORTS

PROJECT:
Gable Shed & Awning

CLIENT:
John Bonham - 0432 379 252

ADDRESS:
388 Laverstock Road, Yass NSW 2582

PROJECT NUMBER:
10557

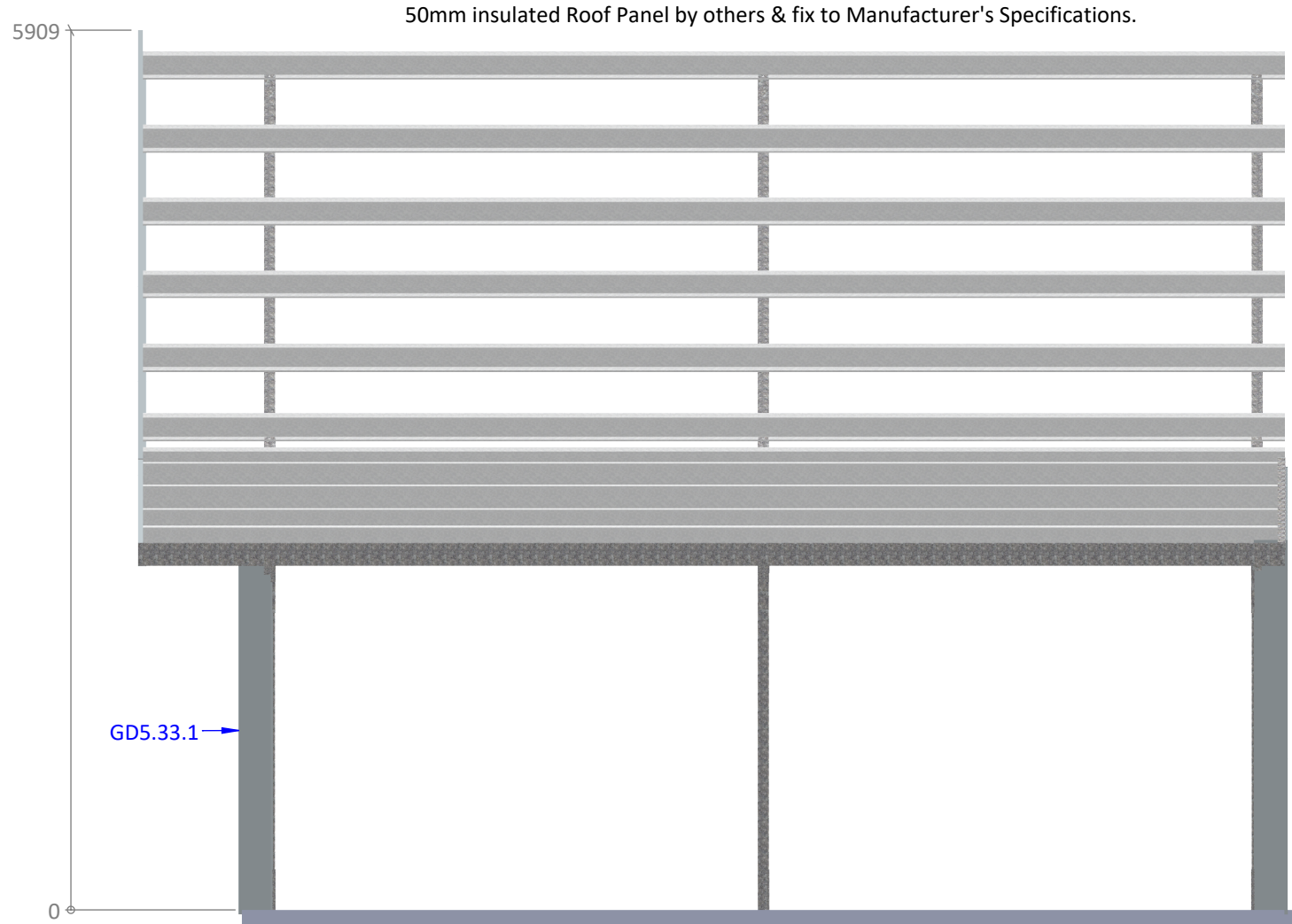
DRAWN BY:
dm3 Solutions

DRAWN DATE:
2024-11-15

© 2024 dm3 Solutions. The Information contained herein is Proprietary, Confidential and the Sole Property of dm3 Solutions. Reproduction in part or in whole is Prohibited without written approval. Unless specified otherwise, dimensions are in millimetres & drawings are not to scale.

[Powered by dm3Solutions.com](https://dm3solutions.com)

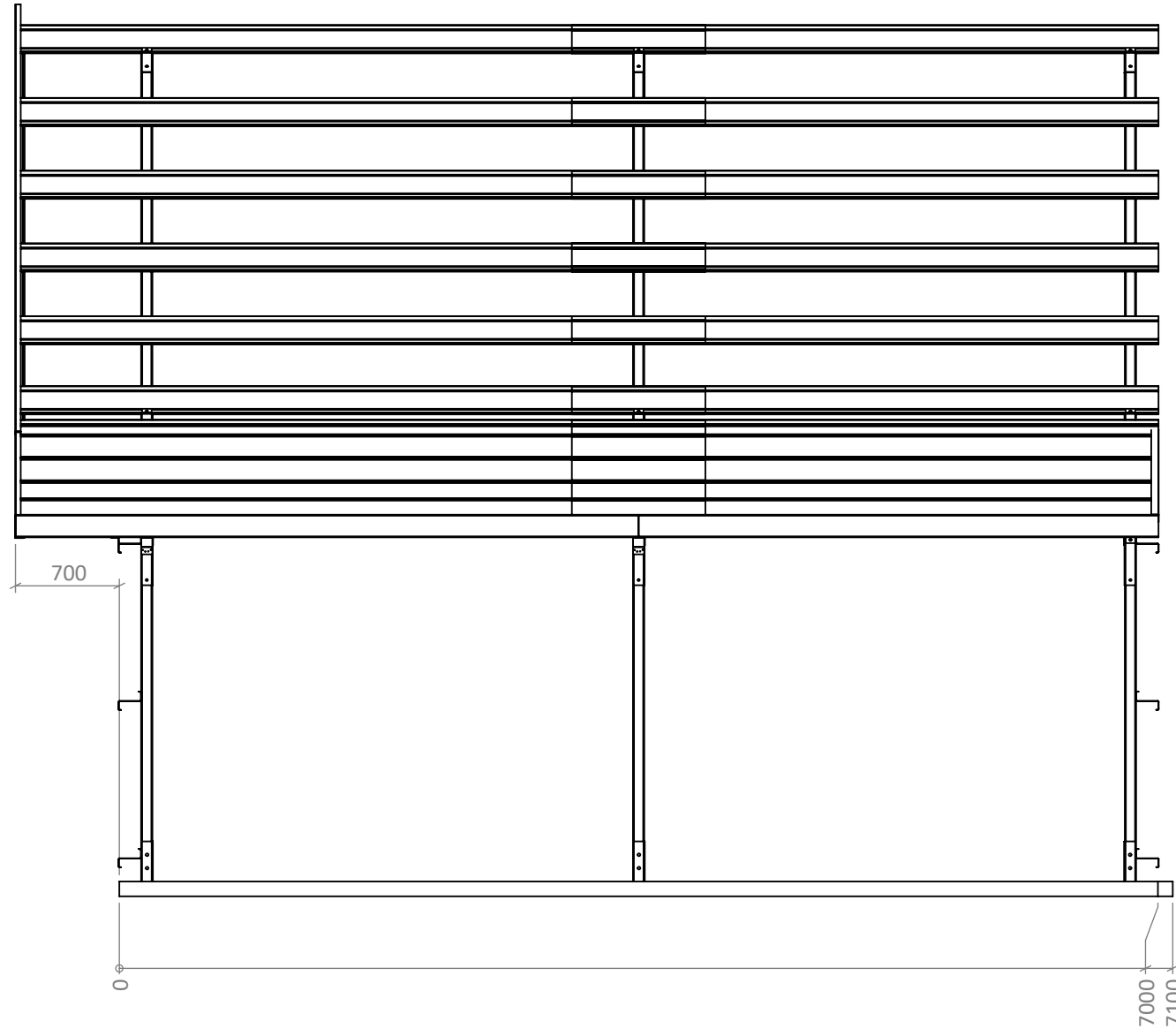
| | | | |
|--------------------|--------------------|----------------------|----------------------------------|
| ISSUE: 1 | SIZE: A4 | SCALE: NTS | DRAWING NUMBER 9 of 34 |
|--------------------|--------------------|----------------------|----------------------------------|



**PROFESSIONAL
CHOICE**
SHEDS AND CARPORTS

| | |
|---|-----------------------------------|
| PROJECT: Gable Shed & Awning | PROJECT NUMBER: 10557 |
| CLIENT: John Bonham - 0432 379 252 | DRAWN BY: dm3 Solutions |
| ADDRESS: 388 Laverstock Road, Yass NSW 2582 | DRAWN DATE: 2024-11-15 |

| | | | |
|---|--------------------|----------------------|-----------------------------------|
| © 2024 dm3 Solutions. The Information contained herein is Proprietary, Confidential and the Sole Property of dm3 Solutions. Reproduction in part or in whole is Prohibited without written approval. Unless specified otherwise, dimensions are in millimetres & drawings are not to scale. | | | |
| Powered by dm3Solutions.com | | | |
| ISSUE: 1 | SIZE: A4 | SCALE: NTS | DRAWING NUMBER 10 of 34 |



**PROFESSIONAL
CHOICE**
SHEDS AND CARPORTS

PROJECT:
Gable Shed & Awning

CLIENT:
John Bonham - 0432 379 252

ADDRESS:
388 Laverstock Road, Yass NSW 2582

PROJECT NUMBER:
10557

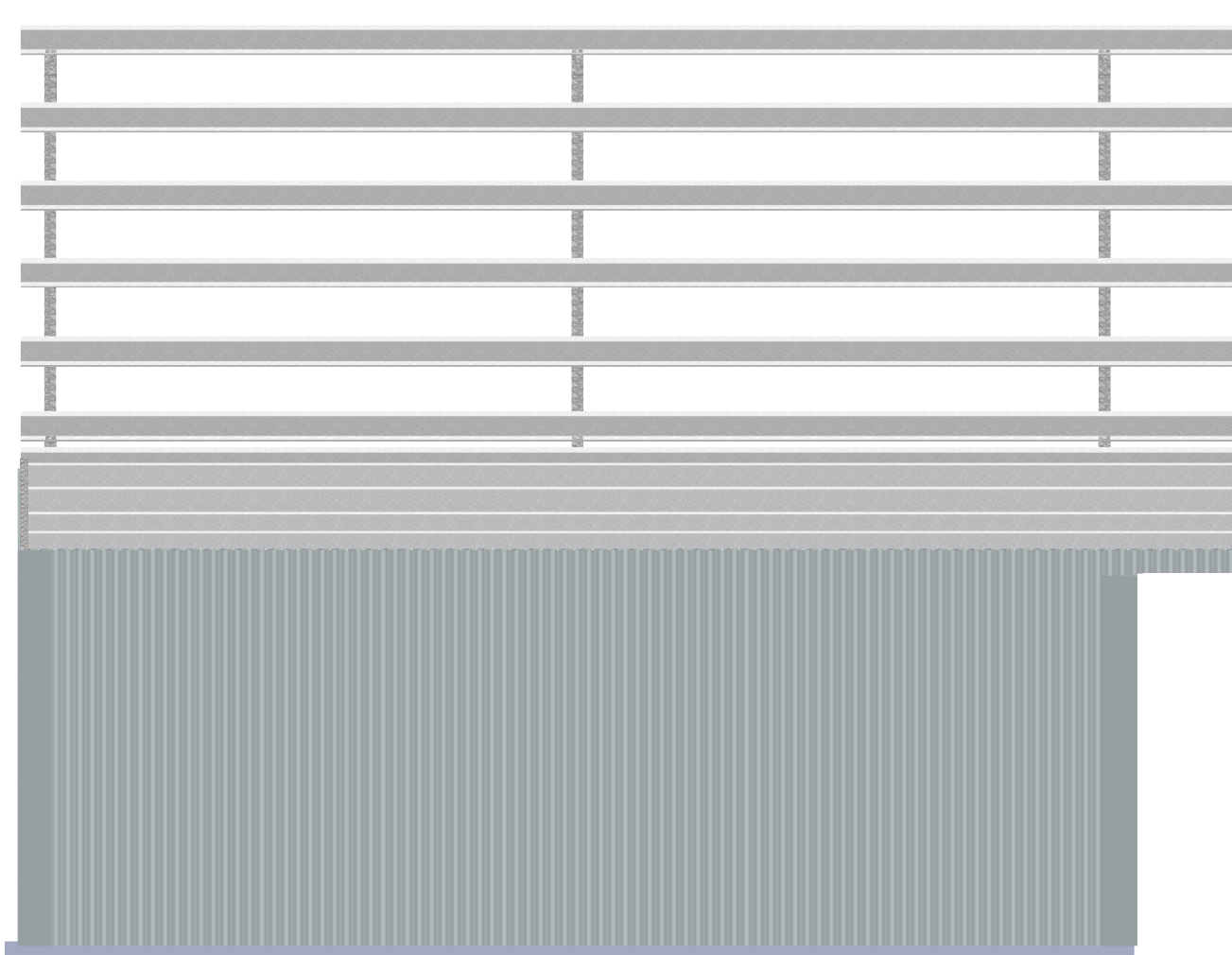
DRAWN BY:
dm3 Solutions

DRAWN DATE:
2024-11-15

© 2024 dm3 Solutions. The Information contained herein is Proprietary, Confidential and the Sole Property of dm3 Solutions. Reproduction in part or in whole is Prohibited without written approval. Unless specified otherwise, dimensions are in millimetres & drawings are not to scale.

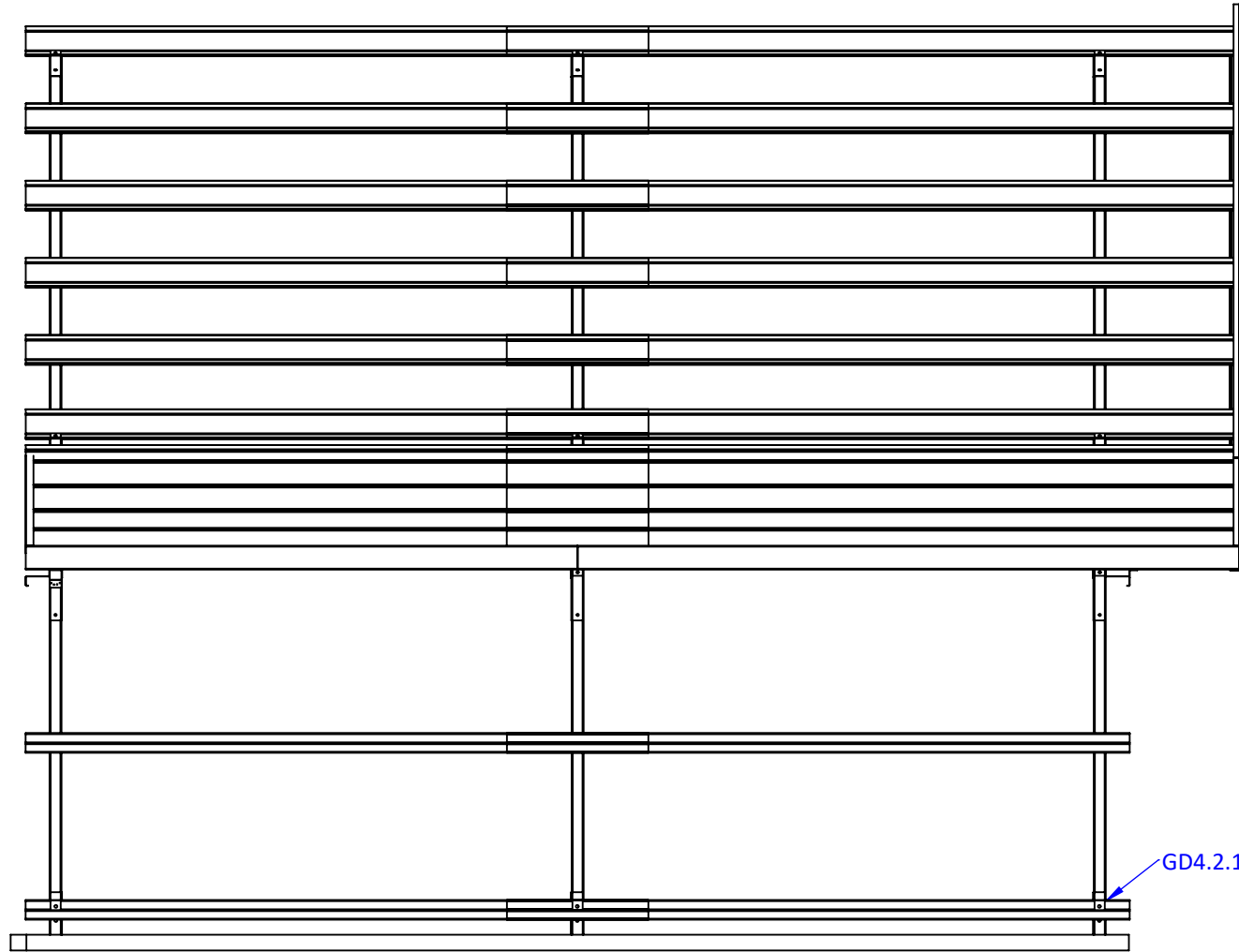
[Powered by dm3Solutions.com](https://dm3solutions.com)

| | | | |
|--------------------|--------------------|----------------------|-----------------------------------|
| ISSUE: 1 | SIZE: A4 | SCALE: NTS | DRAWING NUMBER 11 of 34 |
|--------------------|--------------------|----------------------|-----------------------------------|



**PROFESSIONAL
CHOICE**
SHEDS AND CARPORTS

| | | | | | |
|---|-----------------------------------|---|--------------------|----------------------|-----------------------------------|
| PROJECT: Gable Shed & Awning | PROJECT NUMBER: 10557 | © 2024 dm3 Solutions. The Information contained herein is Proprietary, Confidential and the Sole Property of dm3 Solutions. Reproduction in part or in whole is Prohibited without written approval. Unless specified otherwise, dimensions are in millimetres & drawings are not to scale. Powered by dm3Solutions.com | | | |
| CLIENT: John Bonham - 0432 379 252 | DRAWN BY: dm3 Solutions | ISSUE: 1 | SIZE: A4 | SCALE: NTS | DRAWING NUMBER 12 of 34 |
| ADDRESS: 388 Laverstock Road, Yass NSW 2582 | DRAWN DATE: 2024-11-15 | | | | |



GD4.2.1

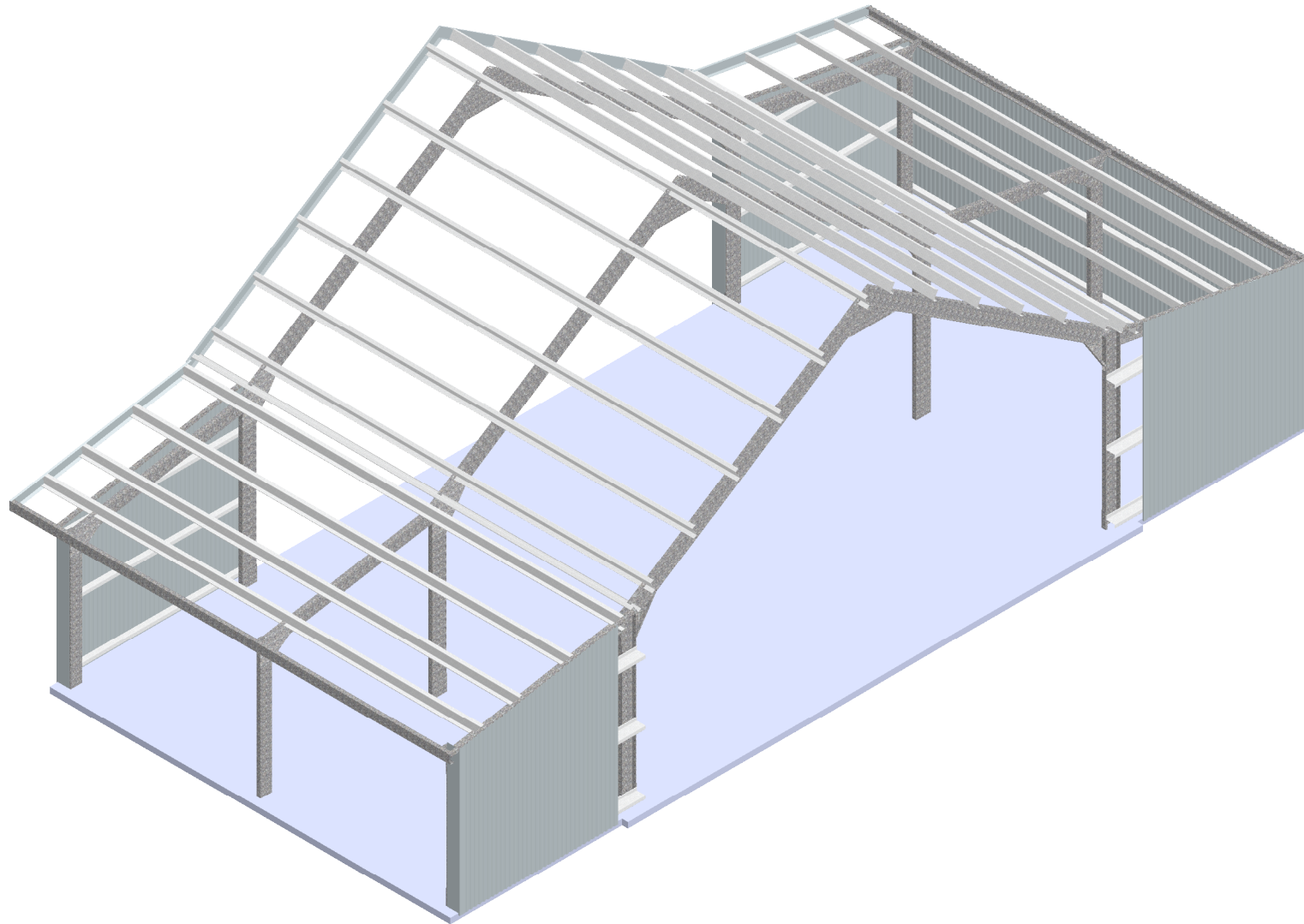


**PROFESSIONAL
CHOICE**
SHEDS AND CARPORTS

| | |
|----------|------------------------------------|
| PROJECT: | Gable Shed & Awning |
| CLIENT: | John Bonham - 0432 379 252 |
| ADDRESS: | 388 Laverstock Road, Yass NSW 2582 |

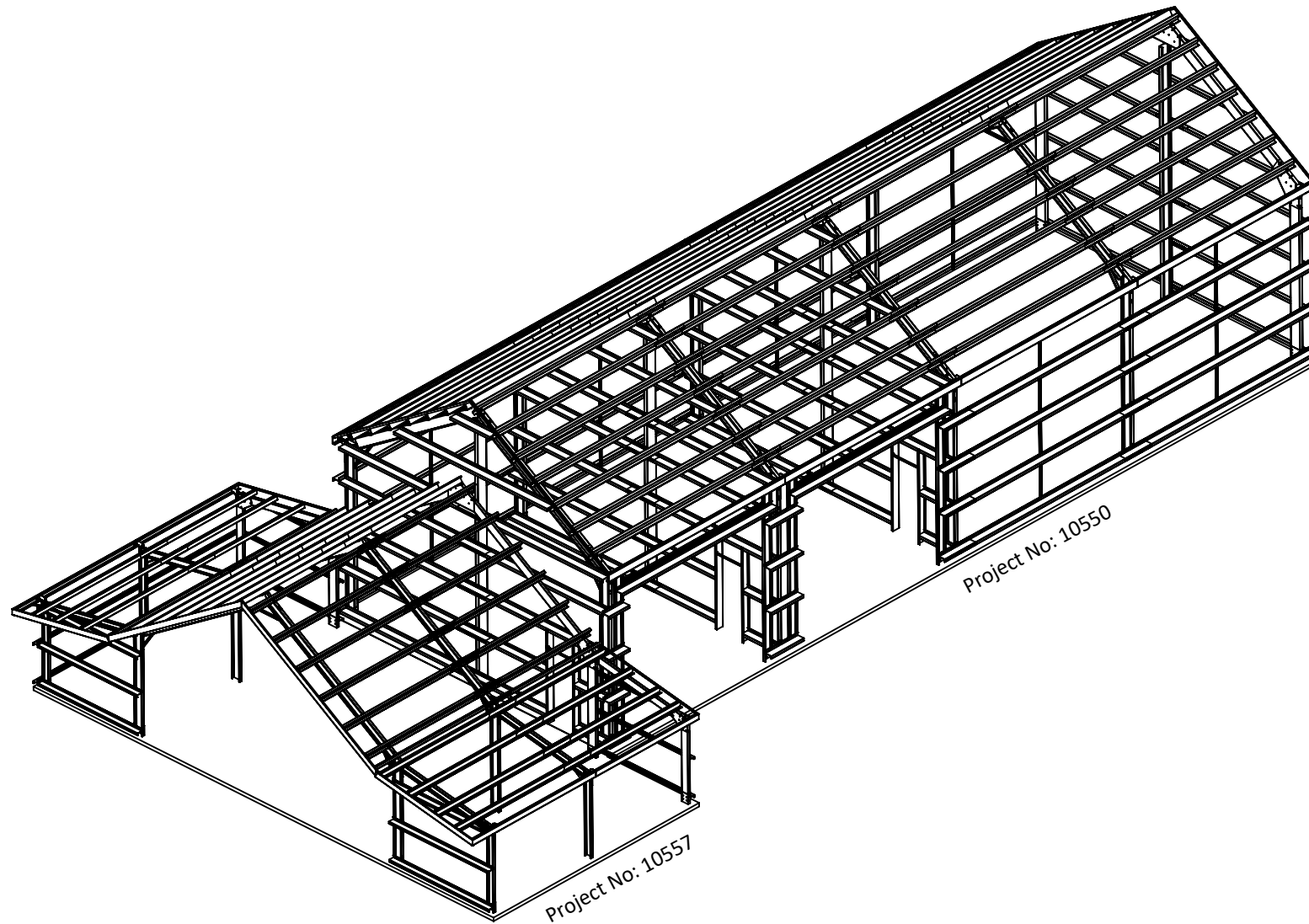
| | |
|-----------------|---------------|
| PROJECT NUMBER: | 10557 |
| DRAWN BY: | dm3 Solutions |
| DRAWN DATE: | 2024-11-15 |

| | | | |
|---|-------|--------|----------------|
| © 2024 dm3 Solutions. The Information contained herein is Proprietary, Confidential and the Sole Property of dm3 Solutions. Reproduction in part or in whole is Prohibited without written approval. Unless specified otherwise, dimensions are in millimetres & drawings are not to scale. | | | |
| Powered by dm3Solutions.com | | | |
| ISSUE: | SIZE: | SCALE: | DRAWING NUMBER |
| 1 | A4 | NTS | 13 of 34 |



**PROFESSIONAL
CHOICE**
SHEDS AND CARPORTS

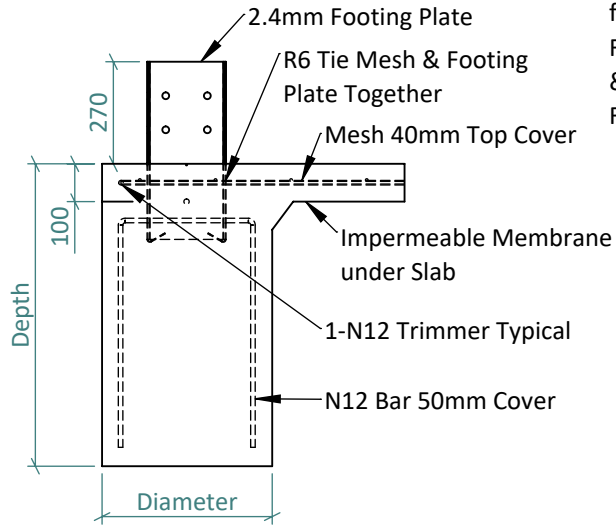
| | | | | | |
|---|-----------------------------------|---|--------------------|----------------------|-----------------------------------|
| PROJECT: Gable Shed & Awning | PROJECT NUMBER: 10557 | © 2024 dm3 Solutions. The Information contained herein is Proprietary, Confidential and the Sole Property of dm3 Solutions. Reproduction in part or in whole is Prohibited without written approval. Unless specified otherwise, dimensions are in millimetres & drawings are not to scale. | | | |
| CLIENT: John Bonham - 0432 379 252 | DRAWN BY: dm3 Solutions | Powered by dm3Solutions.com | | | |
| ADDRESS: 388 Laverstock Road, Yass NSW 2582 | DRAWN DATE: 2024-11-15 | ISSUE: 1 | SIZE: A4 | SCALE: NTS | DRAWING NUMBER 14 of 34 |



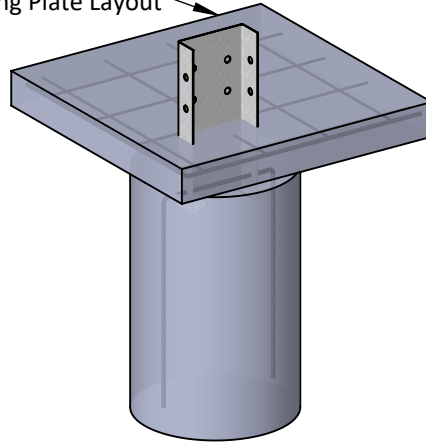
**PROFESSIONAL
CHOICE**
SHEDS AND CARPORTS

| | | | | | |
|--|----------------------------|---|-------------|---------------|----------------------------|
| PROJECT: Gable Shed & Awning | PROJECT NUMBER: 10557 | © 2024 dm3 Solutions. The Information contained herein is Proprietary, Confidential and the Sole Property of dm3 Solutions. Reproduction in part or in whole is Prohibited without written approval. Unless specified otherwise, dimensions are in millimetres & drawings are not to scale. | | | |
| CLIENT: John Bonham - 0432 379 252 | DRAWN BY: dm3 Solutions | Powered by dm3Solutions.com | | | |
| ADDRESS: 388 Laverstock Road, Yass NSW 2582 | DRAWN DATE: 2024-11-15 | ISSUE: 1 | SIZE: A4 | SCALE: NTS | DRAWING NUMBER 15 of 34 |

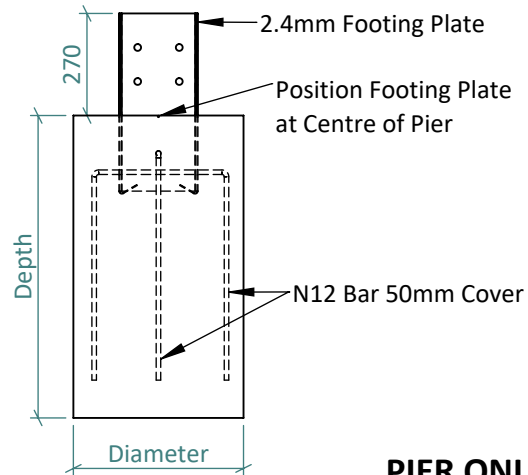
Detail 1.25A



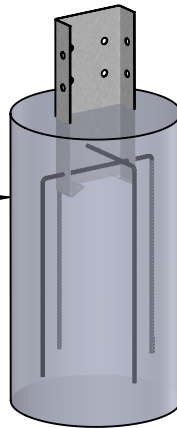
$f'c = 25MPa$
 Footing Plate Position
 & Orientation Refer to
 Footing Plate Layout



PIER WITH SLAB



$f'c = 25MPa$



PIER ONLY

Foundation Notes:

Foundations have been designed assuming an allowable bearing capacity of 100 kPa, undrained cohesion $C_u = 50$ kPa.
 Concrete Strength = 25MPa, Site Class A & S.
 Maximum of 2.5kPa uniformly distributed load and 13kN concentrated load.

| Pier with Slab & Beams | Gable Ends |
|------------------------|------------|
| Depth | 600mm |
| Diameter | 350mm |
| Pier Only | |
| Depth | 800mm |
| Diameter | 350mm |



PROFESSIONAL CHOICE
 SHEDS AND CARPORTS

PROJECT:
Gable Shed & Awning

CLIENT:
 John Bonham - 0432 379 252

ADDRESS:
 388 Laverstock Road, Yass NSW 2582

PROJECT NUMBER:
10557

DRAWN BY:
dm3 Solutions

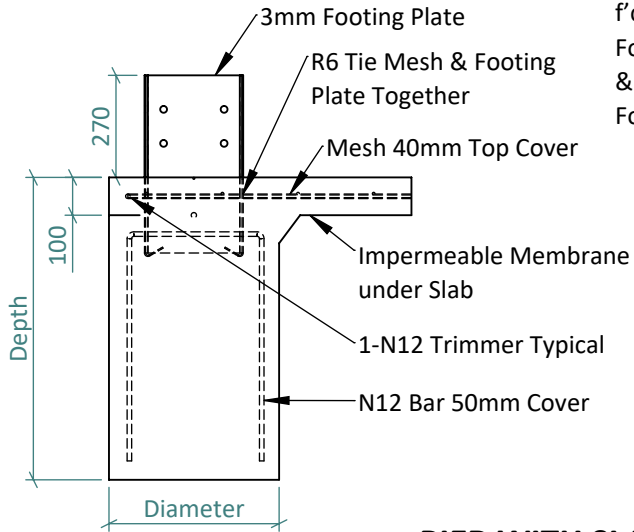
DRAWN DATE:
 2024-11-15

© 2024 dm3 Solutions. The Information contained herein is Proprietary, Confidential and the Sole Property of dm3 Solutions. Reproduction in part or in whole is Prohibited without written approval. Unless specified otherwise, dimensions are in millimetres & drawings are not to scale.

Powered by dm3Solutions.com

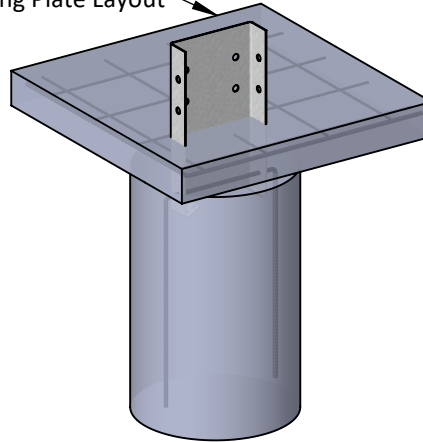
| | | | |
|--------|-------|--------|----------------|
| ISSUE: | SIZE: | SCALE: | DRAWING NUMBER |
| 1 | A4 | NTS | 16 of 34 |

Detail 1.25B



PIER WITH SLAB

$f'c = 25\text{MPa}$
 Footing Plate Position
 & Orientation Refer to
 Footing Plate Layout

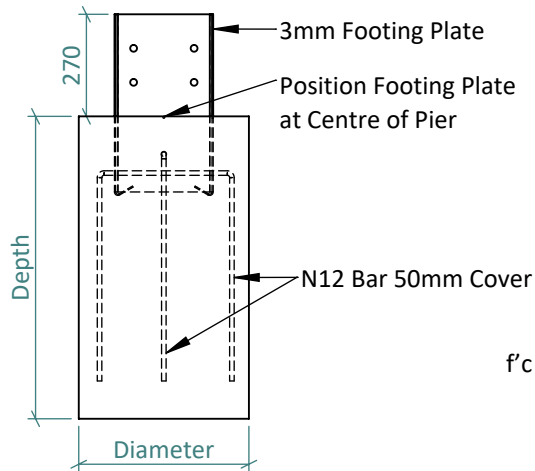


Foundation Notes:

Foundations have been designed assuming an allowable bearing capacity of 100 kPa, undrained cohesion $C_u = 50$ kPa. Concrete Strength = 25MPa, Site Class A & S. Maximum of 2.5kPa uniformly distributed load and 13kN concentrated load.

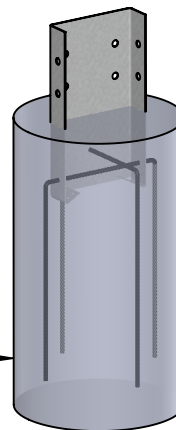
Pier with Slab & Beams

- Depth 600mm
- Diameter 450mm
- Pier Only**
- Depth 1200mm
- Diameter 450mm



PIER ONLY

$f'c = 25\text{MPa}$



PROFESSIONAL CHOICE
 SHEDS AND CARPORTS

PROJECT:
Gable Shed & Awning

CLIENT:
 John Bonham - 0432 379 252

ADDRESS:
 388 Laverstock Road, Yass NSW 2582

PROJECT NUMBER:
10557

DRAWN BY:
dm3 Solutions

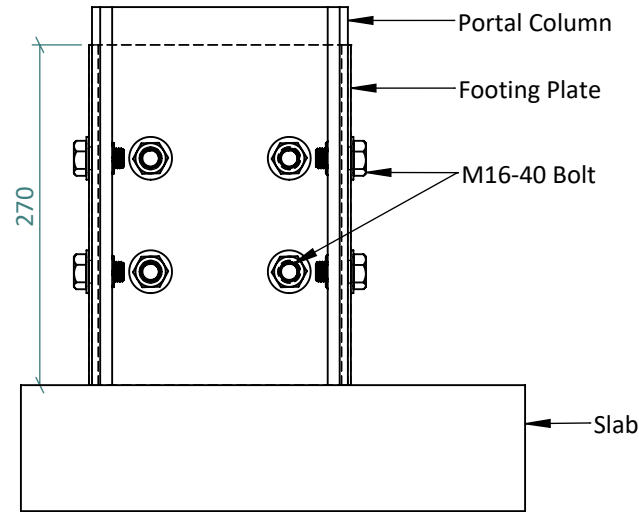
DRAWN DATE:
 2024-11-15

© 2024 dm3 Solutions. The Information contained herein is Proprietary, Confidential and the Sole Property of dm3 Solutions. Reproduction in part or in whole is Prohibited without written approval. Unless specified otherwise, dimensions are in millimetres & drawings are not to scale.

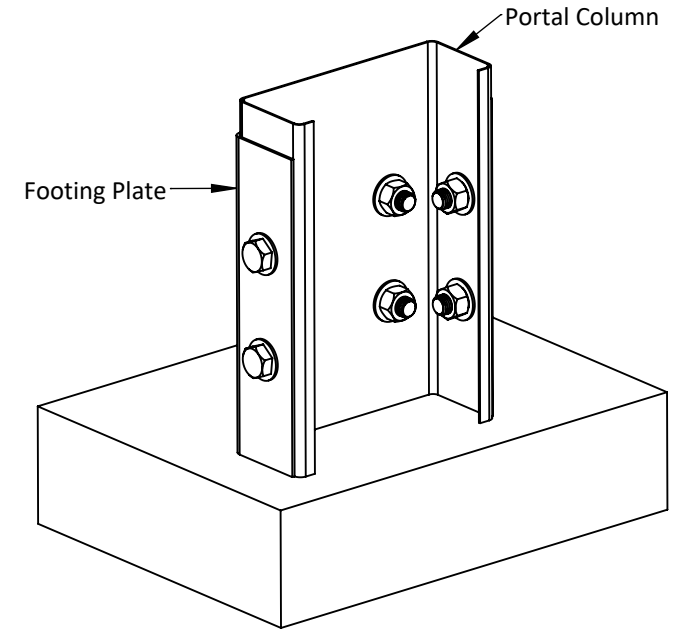
Powered by dm3Solutions.com

| | | | |
|--------|-------|--------|----------------|
| ISSUE: | SIZE: | SCALE: | DRAWING NUMBER |
| 1 | A4 | NTS | 17 of 34 |

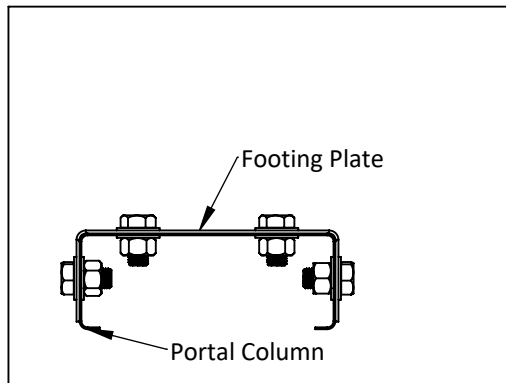
Detail 1.32



ELEVATION



ISOMETRIC



PLAN



**PROFESSIONAL
CHOICE**
SHEDS AND CARPORTS

PROJECT:
Gable Shed & Awning

CLIENT:
John Bonham - 0432 379 252

ADDRESS:
388 Laverstock Road, Yass NSW 2582

PROJECT NUMBER:
10557

DRAWN BY:
dm3 Solutions

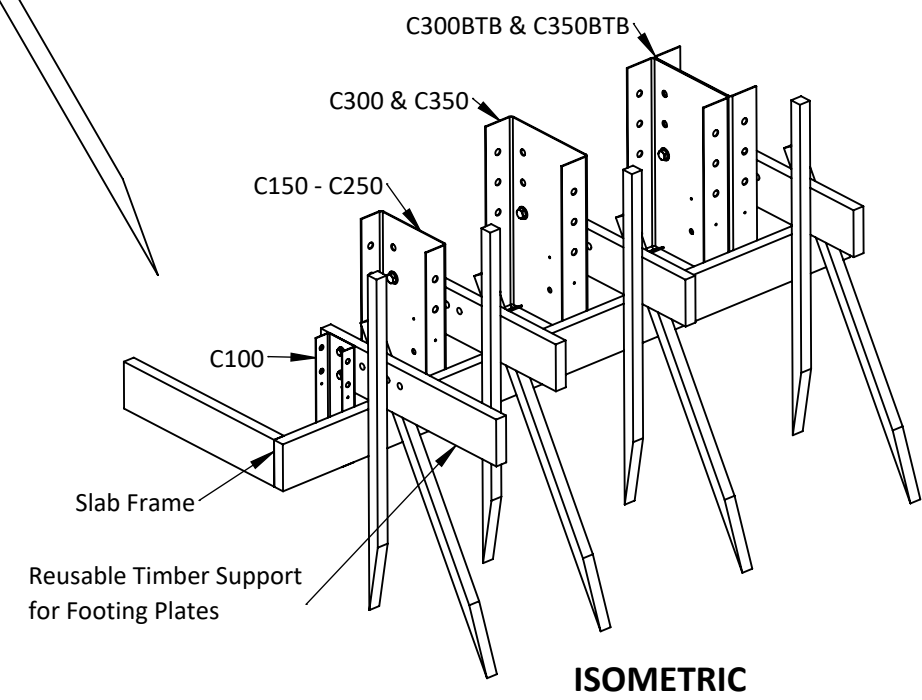
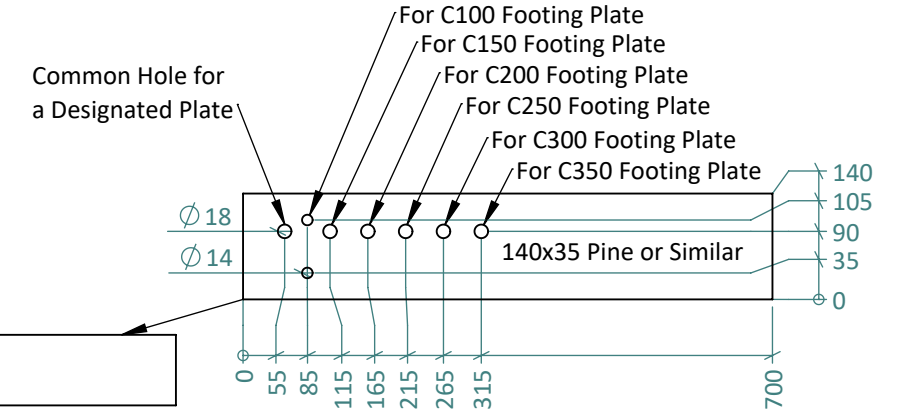
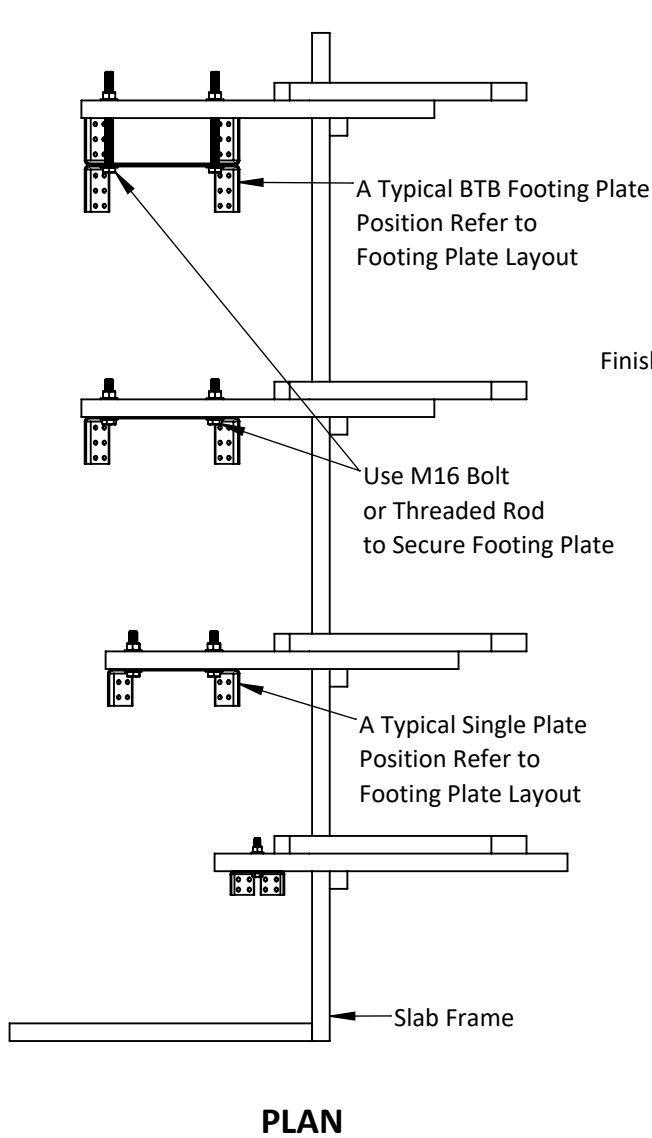
DRAWN DATE:
2024-11-15

© 2024 dm3 Solutions. The Information contained herein is Proprietary, Confidential and the Sole Property of dm3 Solutions. Reproduction in part or in whole is Prohibited without written approval. Unless specified otherwise, dimensions are in millimetres & drawings are not to scale.

Powered by dm3Solutions.com

| | | | |
|--------------------|--------------------|----------------------|-----------------------------------|
| ISSUE: 1 | SIZE: A4 | SCALE: NTS | DRAWING NUMBER 18 of 34 |
|--------------------|--------------------|----------------------|-----------------------------------|

Detail 1.50



PROFESSIONAL CHOICE
SHEDS AND CARPORTS

PROJECT:
Gable Shed & Awning

CLIENT:
John Bonham - 0432 379 252

ADDRESS:
388 Laverstock Road, Yass NSW 2582

PROJECT NUMBER:
10557

DRAWN BY:
dm3 Solutions

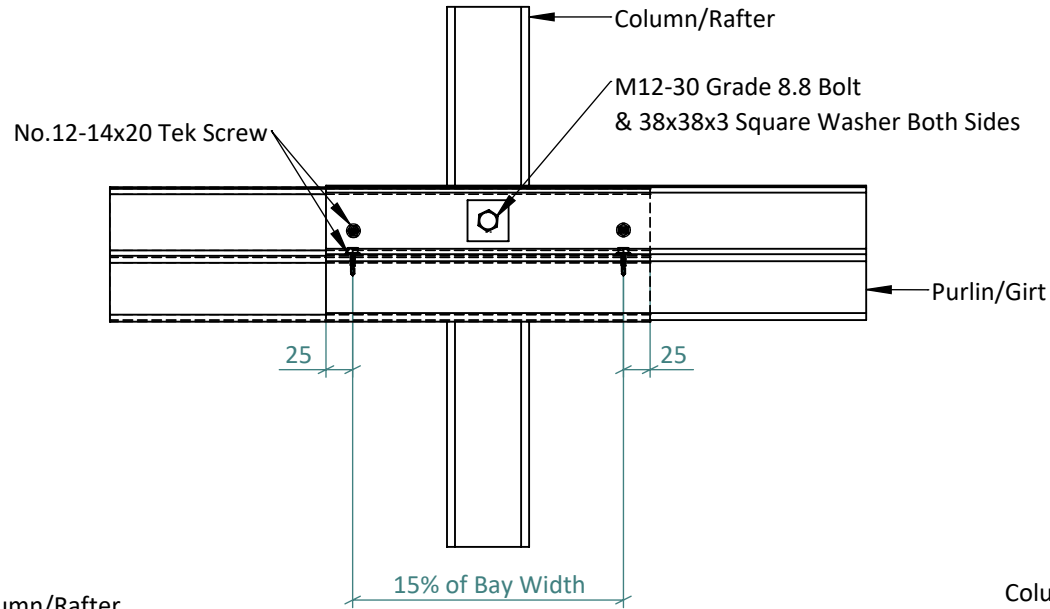
DRAWN DATE:
2024-11-15

© 2024 dm3 Solutions. The Information contained herein is Proprietary, Confidential and the Sole Property of dm3 Solutions. Reproduction in part or in whole is Prohibited without written approval. Unless specified otherwise, dimensions are in millimetres & drawings are not to scale.

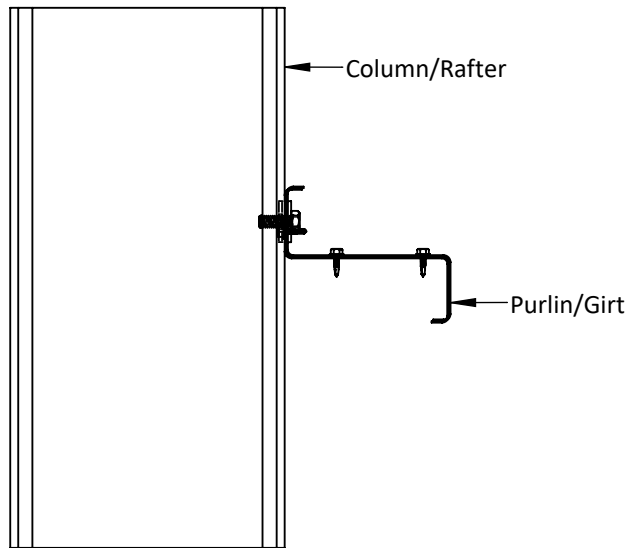
Powered by [dm3Solutions.com](https://www.dm3solutions.com)

| | | | |
|-------------|-------------|---------------|-----------------------------|
| ISSUE: 1 | SIZE: A4 | SCALE: NTS | DRAWING NUMBER: 19 of 34 |
|-------------|-------------|---------------|-----------------------------|

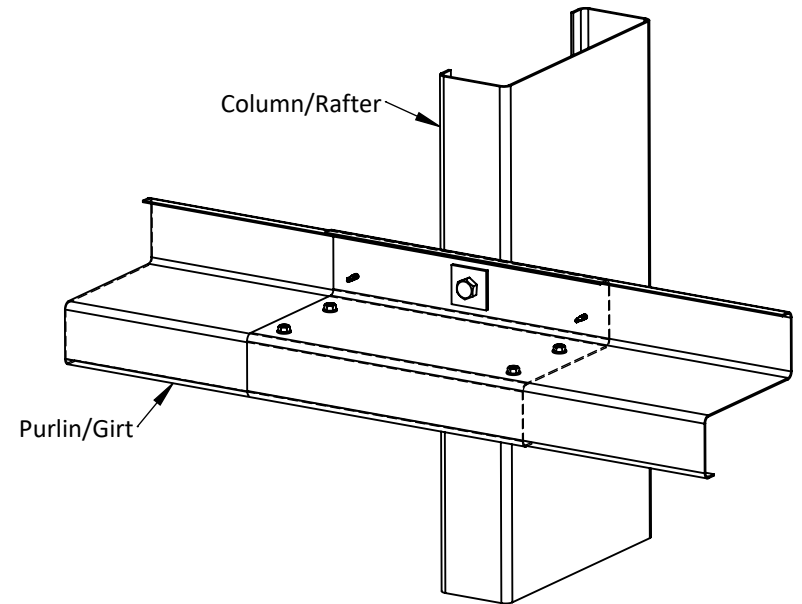
Detail GD4.1



ELEVATION 2



ELEVATION 1



ISOMETRIC



**PROFESSIONAL
CHOICE**
SHEDS AND CARPORTS

PROJECT:
Gable Shed & Awning

CLIENT:
John Bonham - 0432 379 252

ADDRESS:
388 Laverstock Road, Yass NSW 2582

PROJECT NUMBER:
10557

DRAWN BY:
dm3 Solutions

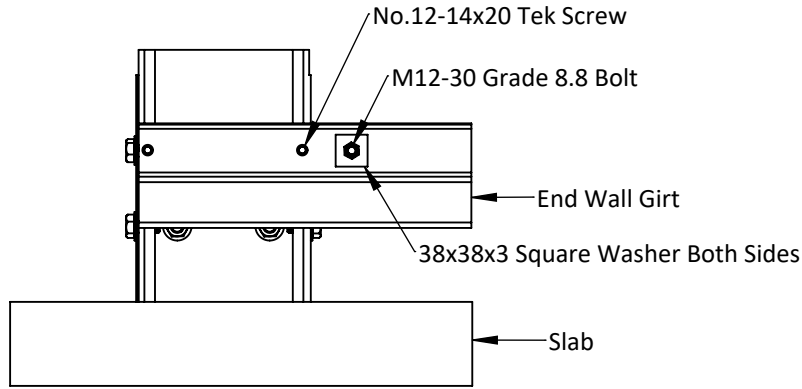
DRAWN DATE:
2024-11-15

© 2024 dm3 Solutions. The Information contained herein is Proprietary, Confidential and the Sole Property of dm3 Solutions. Reproduction in part or in whole is Prohibited without written approval. Unless specified otherwise, dimensions are in millimetres & drawings are not to scale.

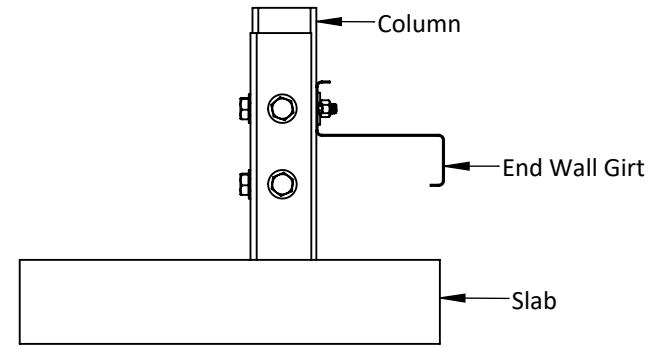
Powered by [dm3Solutions.com](https://dm3solutions.com)

| | | | |
|--------------------|--------------------|----------------------|------------------------------------|
| ISSUE: 1 | SIZE: A4 | SCALE: NTS | DRAWING NUMBER: 20 of 34 |
|--------------------|--------------------|----------------------|------------------------------------|

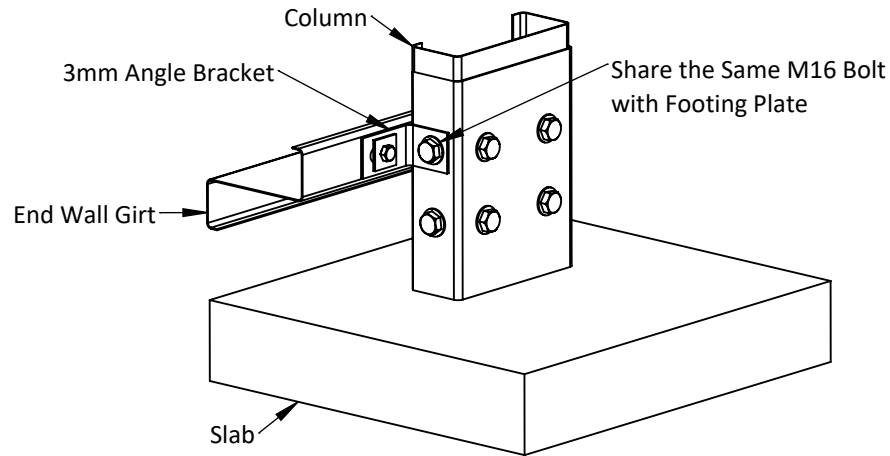
Detail GD4.2.1



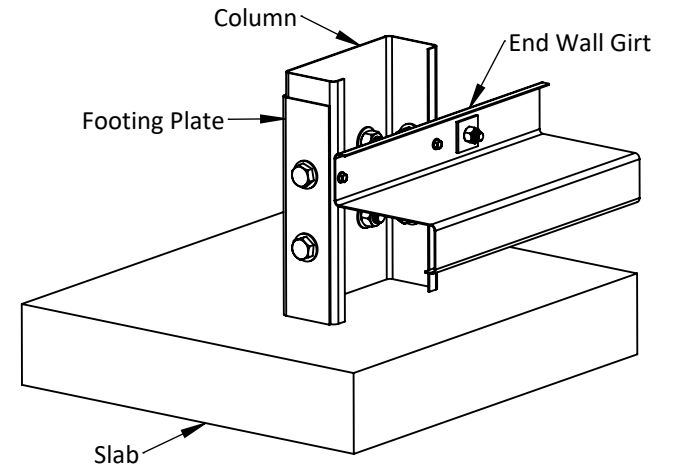
END ELEVATION



SIDE ELEVATION



ISOMETRIC 2



ISOMETRIC 1



**PROFESSIONAL
CHOICE**
SHEDS AND CARPORTS

PROJECT:
Gable Shed & Awning

CLIENT:
John Bonham - 0432 379 252

ADDRESS:
388 Laverstock Road, Yass NSW 2582

PROJECT NUMBER:
10557

DRAWN BY:
dm3 Solutions

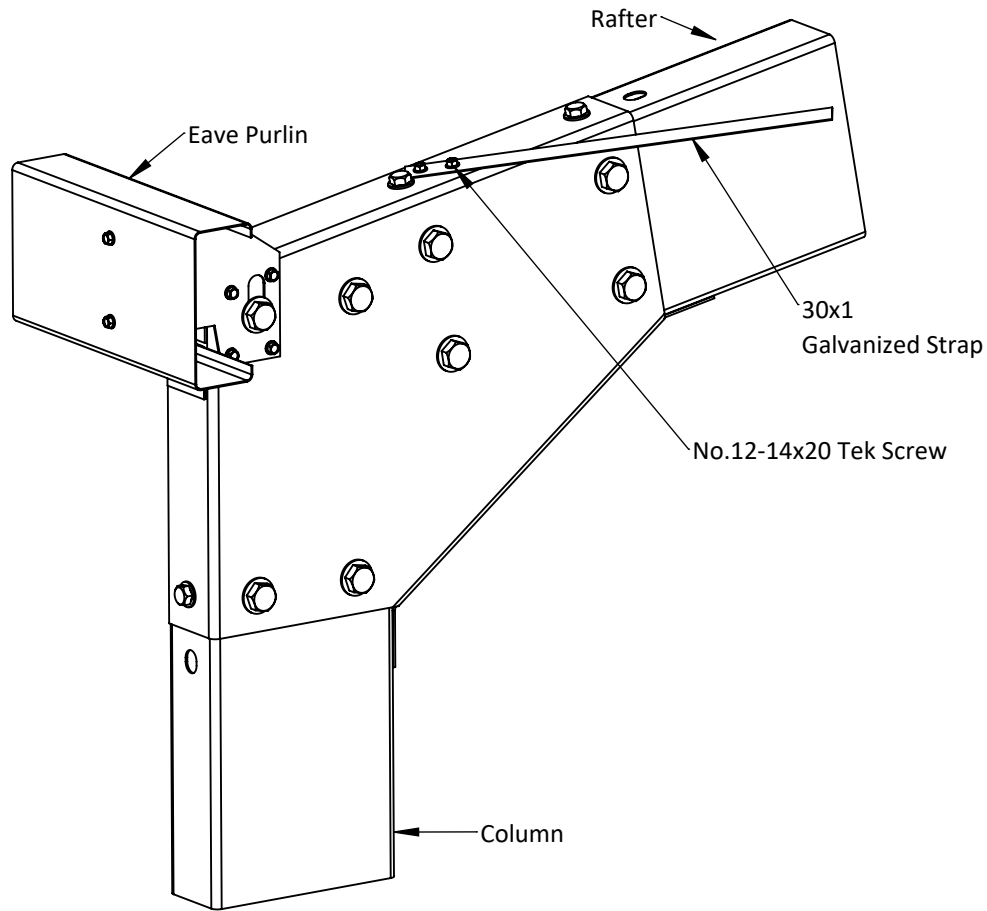
DRAWN DATE:
2024-11-15

© 2024 dm3 Solutions. The Information contained herein is Proprietary, Confidential and the Sole Property of dm3 Solutions. Reproduction in part or in whole is Prohibited without written approval. Unless specified otherwise, dimensions are in millimetres & drawings are not to scale.

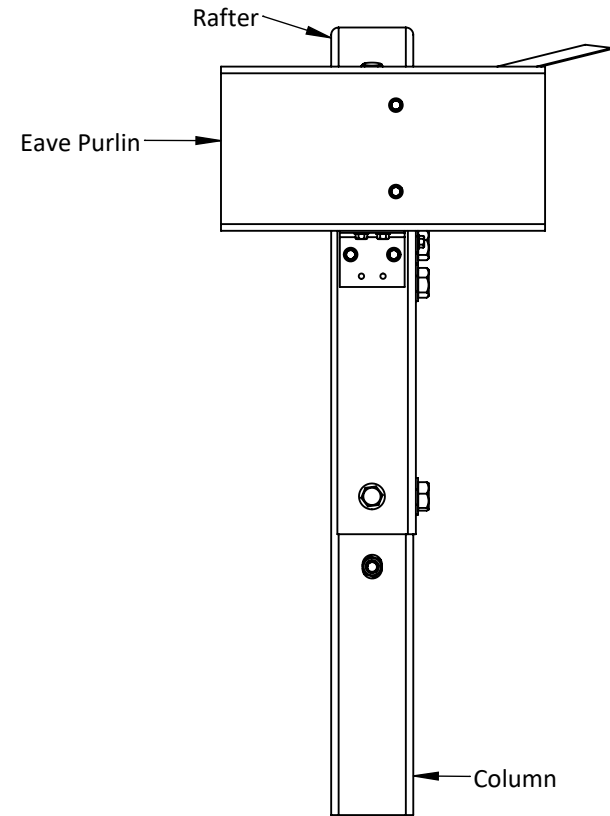
Powered by dm3Solutions.com

| | | | |
|--------------------|--------------------|----------------------|------------------------------------|
| ISSUE: 1 | SIZE: A4 | SCALE: NTS | DRAWING NUMBER: 21 of 34 |
|--------------------|--------------------|----------------------|------------------------------------|

Detail GD4.5



ISOMETRIC



ELEVATION



**PROFESSIONAL
CHOICE**
SHEDS AND CARPORTS

PROJECT:
Gable Shed & Awning

CLIENT:
John Bonham - 0432 379 252

ADDRESS:
388 Laverstock Road, Yass NSW 2582

PROJECT NUMBER:
10557

DRAWN BY:
dm3 Solutions

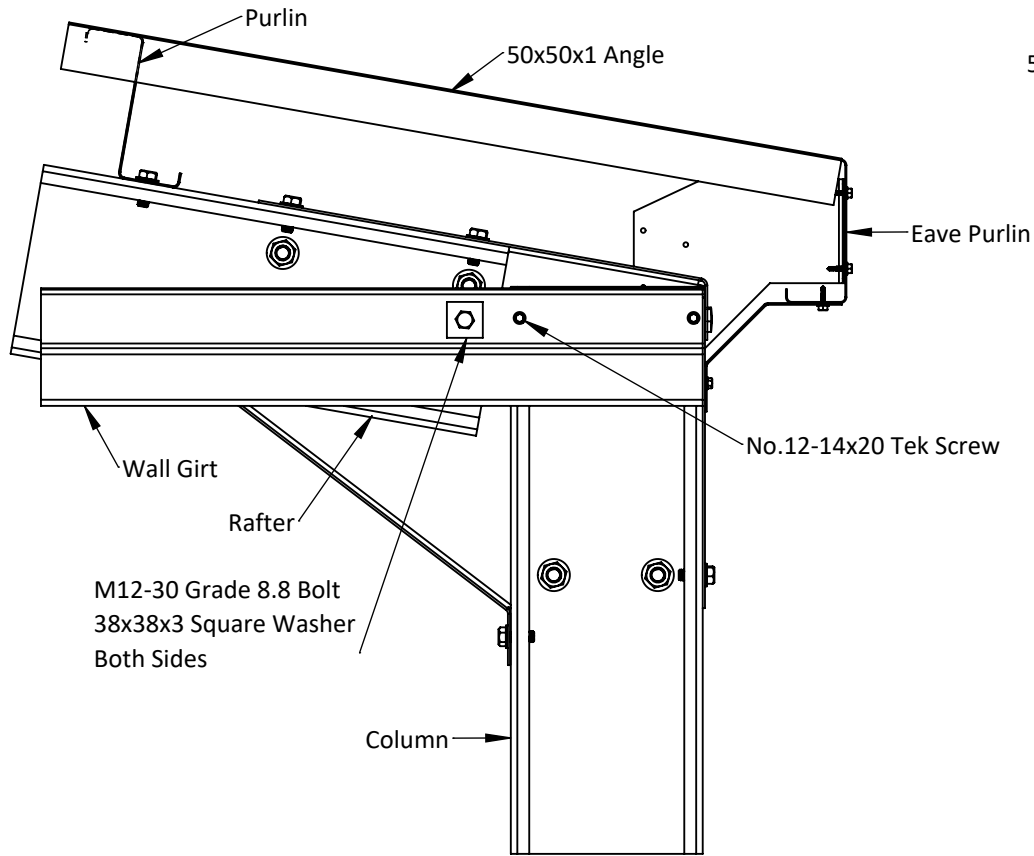
DRAWN DATE:
2024-11-15

© 2024 dm3 Solutions. The Information contained herein is Proprietary, Confidential and the Sole Property of dm3 Solutions. Reproduction in part or in whole is Prohibited without written approval. Unless specified otherwise, dimensions are in millimetres & drawings are not to scale.

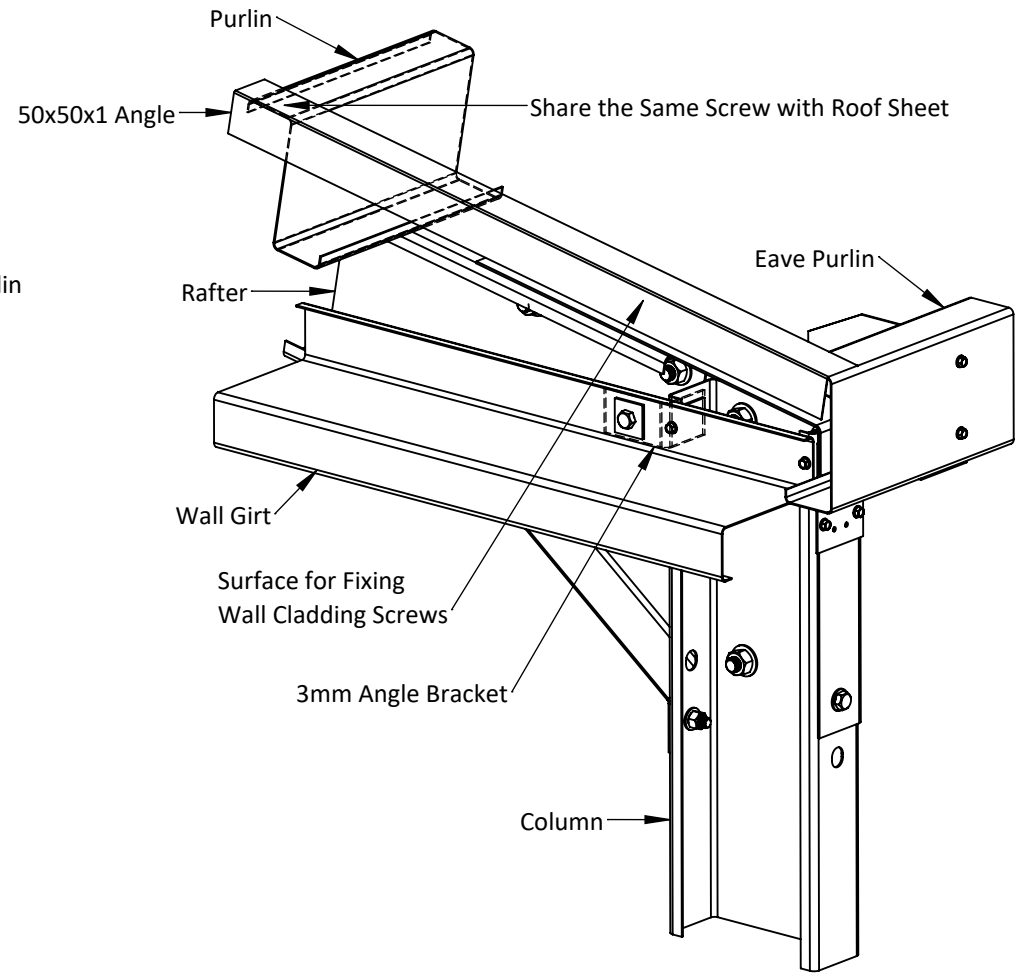
Powered by dm3Solutions.com

| | | | |
|--------------------|--------------------|----------------------|------------------------------------|
| ISSUE: 1 | SIZE: A4 | SCALE: NTS | DRAWING NUMBER: 22 of 34 |
|--------------------|--------------------|----------------------|------------------------------------|

Detail GD4.13



ELEVATION



ISOMETRIC



**PROFESSIONAL
CHOICE**
SHEDS AND CARPORTS

PROJECT:
Gable Shed & Awning

CLIENT:
John Bonham - 0432 379 252

ADDRESS:
388 Laverstock Road, Yass NSW 2582

PROJECT NUMBER:
10557

DRAWN BY:
dm3 Solutions

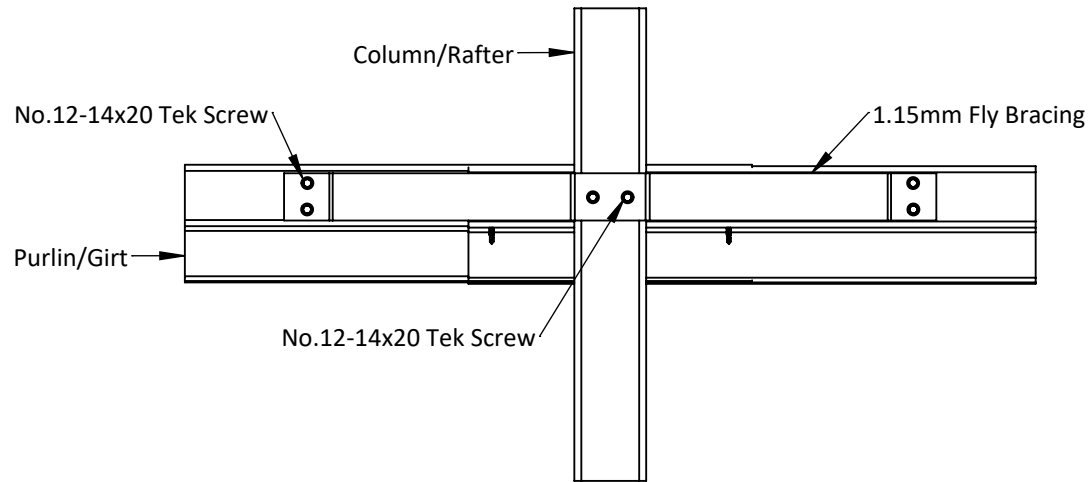
DRAWN DATE:
2024-11-15

© 2024 dm3 Solutions. The Information contained herein is Proprietary, Confidential and the Sole Property of dm3 Solutions. Reproduction in part or in whole is Prohibited without written approval. Unless specified otherwise, dimensions are in millimetres & drawings are not to scale.

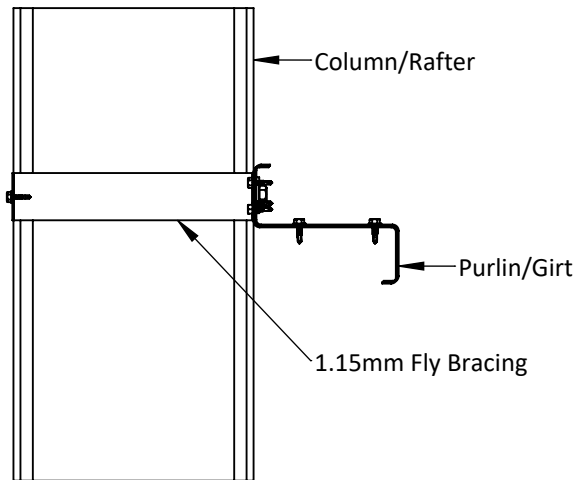
Powered by dm3solutions.com

| | | | |
|--------------------|--------------------|----------------------|-----------------------------------|
| ISSUE: 1 | SIZE: A4 | SCALE: NTS | DRAWING NUMBER 23 of 34 |
|--------------------|--------------------|----------------------|-----------------------------------|

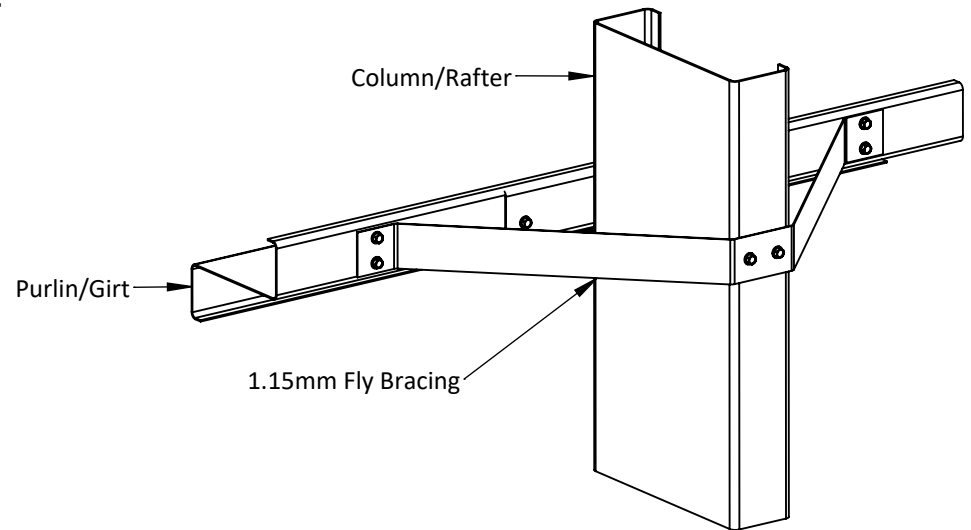
Detail GD4.17



ELEVATION 2



ELEVATION 1



ISOMETRIC



**PROFESSIONAL
CHOICE**
SHEDS AND CARPORTS

PROJECT:
Gable Shed & Awning

CLIENT:
John Bonham - 0432 379 252

ADDRESS:
388 Laverstock Road, Yass NSW 2582

PROJECT NUMBER:
10557

DRAWN BY:
dm3 Solutions

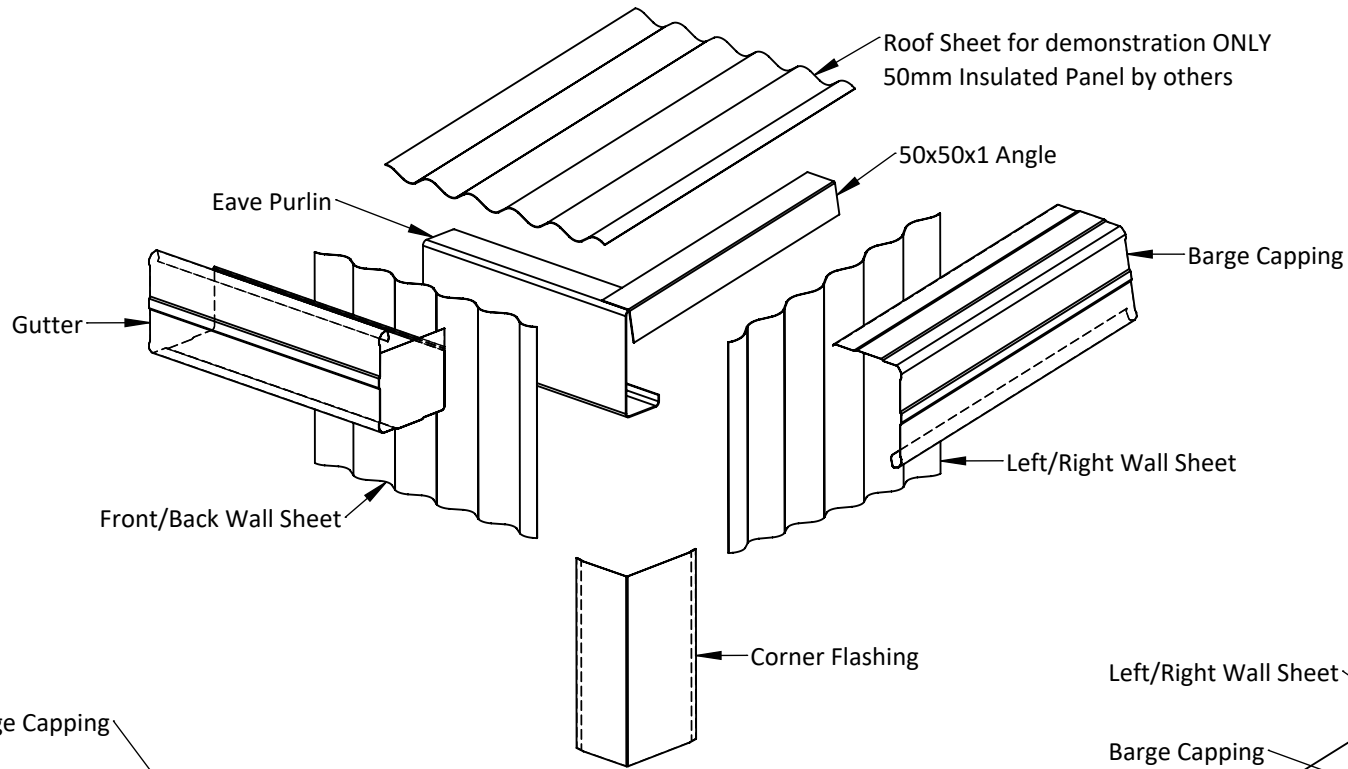
DRAWN DATE:
2024-11-15

© 2024 dm3 Solutions. The Information contained herein is Proprietary, Confidential and the Sole Property of dm3 Solutions. Reproduction in part or in whole is Prohibited without written approval. Unless specified otherwise, dimensions are in millimetres & drawings are not to scale.

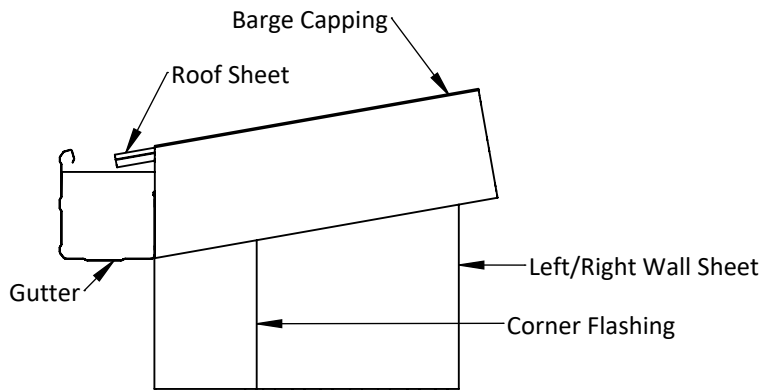
Powered by dm3Solutions.com

| | | | |
|--------------------|--------------------|----------------------|-----------------------------------|
| ISSUE: 1 | SIZE: A4 | SCALE: NTS | DRAWING NUMBER 24 of 34 |
|--------------------|--------------------|----------------------|-----------------------------------|

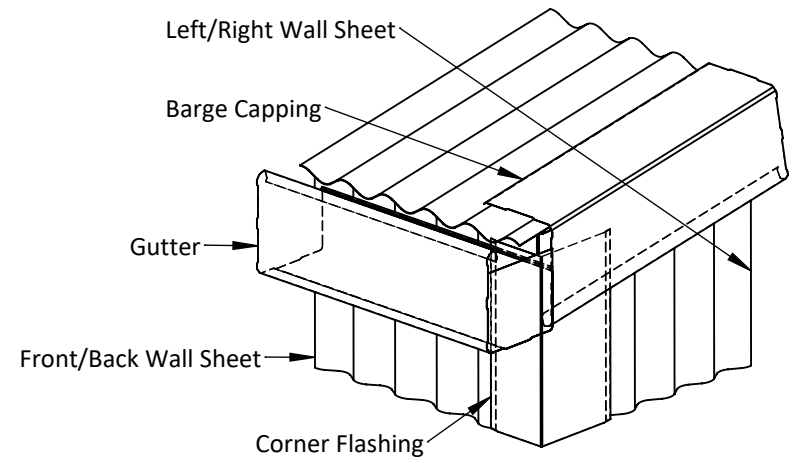
Detail GD5.2.2



EXPLODED VIEW



ELEVATION



ISOMETRIC



**PROFESSIONAL
CHOICE**
SHEDS AND CARPORTS

PROJECT:
Gable Shed & Awning

CLIENT:
John Bonham - 0432 379 252

ADDRESS:
388 Laverstock Road, Yass NSW 2582

PROJECT NUMBER:
10557

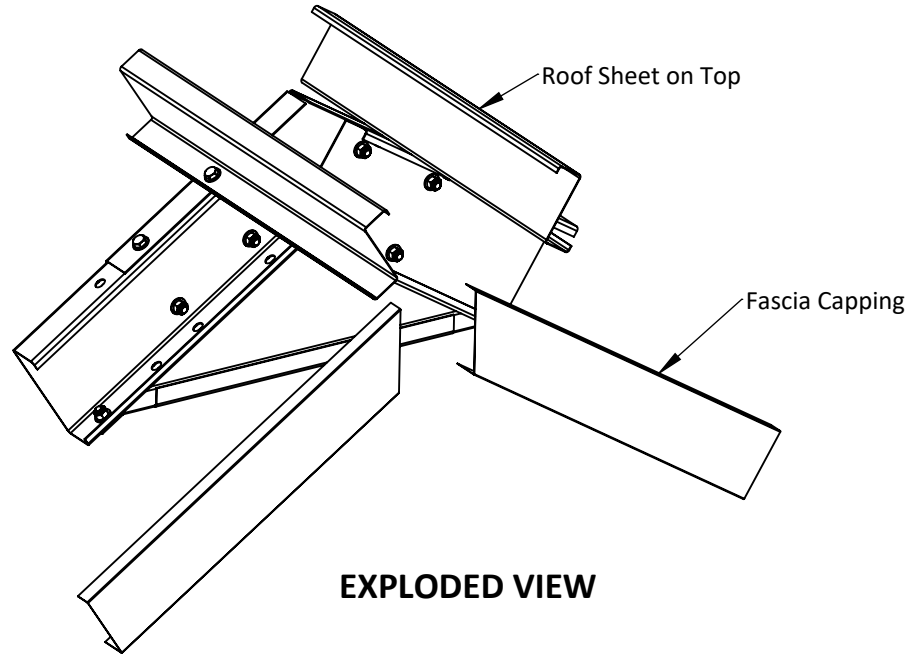
DRAWN BY:
dm3 Solutions

DRAWN DATE:
2024-11-15

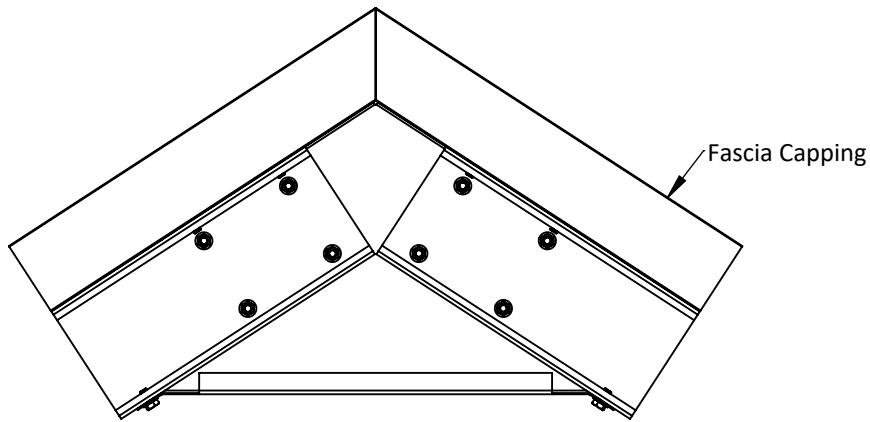
© 2024 dm3 Solutions. The Information contained herein is Proprietary, Confidential and the Sole Property of dm3 Solutions. Reproduction in part or in whole is Prohibited without written approval. Unless specified otherwise, dimensions are in millimetres & drawings are not to scale.

Powered by dm3Solutions.com

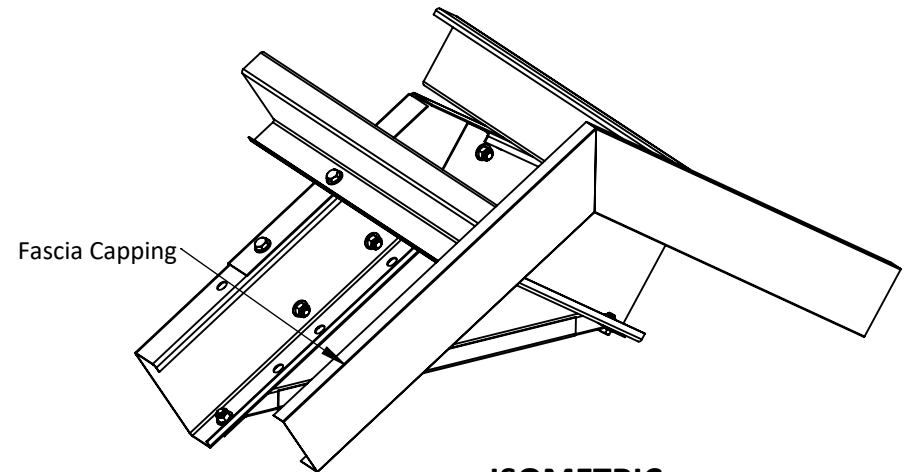
| | | | |
|--------------------|--------------------|----------------------|-----------------------------------|
| ISSUE: 1 | SIZE: A4 | SCALE: NTS | DRAWING NUMBER 25 of 34 |
|--------------------|--------------------|----------------------|-----------------------------------|



EXPLODED VIEW



ELEVATION



ISOMETRIC



**PROFESSIONAL
CHOICE**
SHEDS AND CARPORTS

PROJECT:
Gable Shed & Awning

CLIENT:
John Bonham - 0432 379 252

ADDRESS:
388 Laverstock Road, Yass NSW 2582

PROJECT NUMBER:
10557

DRAWN BY:
dm3 Solutions

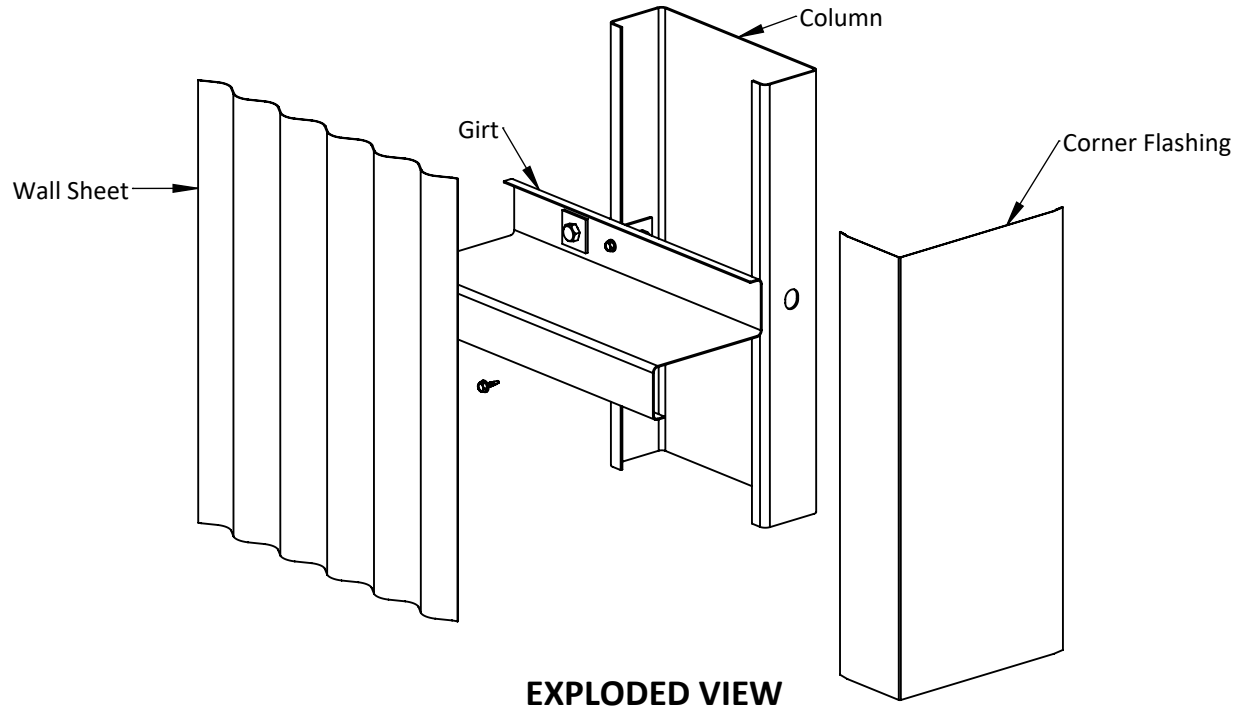
DRAWN DATE:
2024-11-15

© 2024 dm3 Solutions. The Information contained herein is Proprietary, Confidential and the Sole Property of dm3 Solutions. Reproduction in part or in whole is Prohibited without written approval. Unless specified otherwise, dimensions are in millimetres & drawings are not to scale.

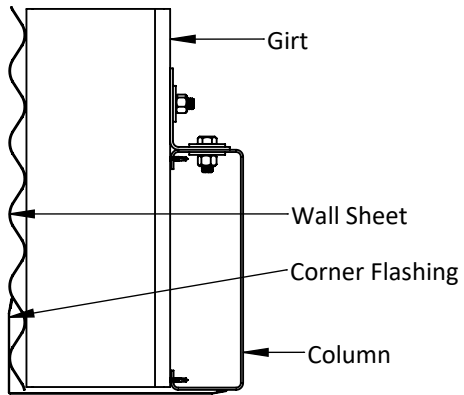
Powered by dm3Solutions.com

| | | | |
|--------------------|--------------------|----------------------|-----------------------------------|
| ISSUE: 1 | SIZE: A4 | SCALE: NTS | DRAWING NUMBER 26 of 34 |
|--------------------|--------------------|----------------------|-----------------------------------|

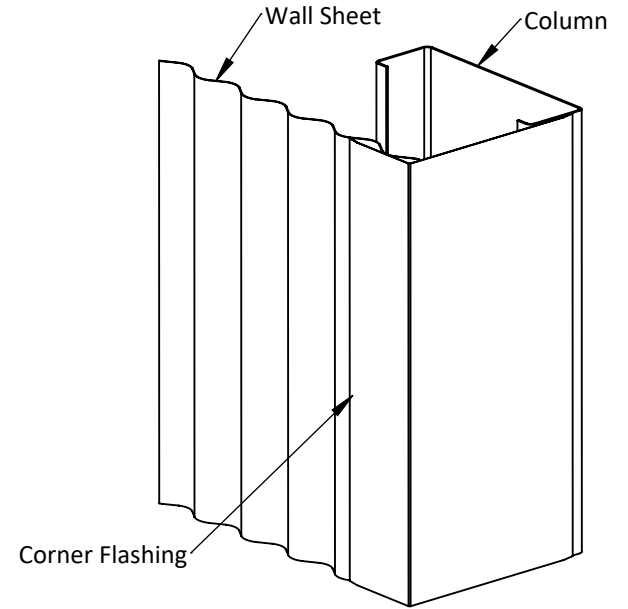
Detail GD5.33.1



EXPLODED VIEW



PLAN



ISOMETRIC



**PROFESSIONAL
CHOICE**
SHEDS AND CARPORTS

PROJECT:
Gable Shed & Awning

CLIENT:
John Bonham - 0432 379 252

ADDRESS:
388 Laverstock Road, Yass NSW 2582

PROJECT NUMBER:
10557

DRAWN BY:
dm3 Solutions

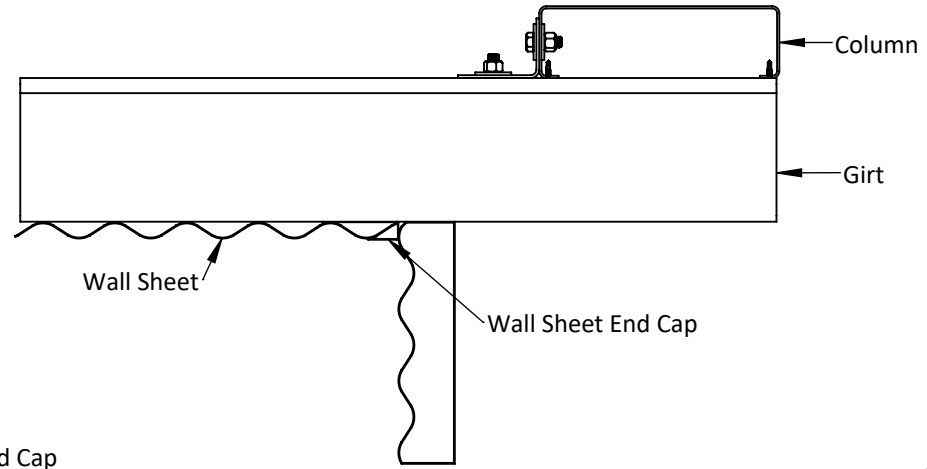
DRAWN DATE:
2024-11-15

© 2024 dm3 Solutions. The Information contained herein is Proprietary, Confidential and the Sole Property of dm3 Solutions. Reproduction in part or in whole is Prohibited without written approval. Unless specified otherwise, dimensions are in millimetres & drawings are not to scale.

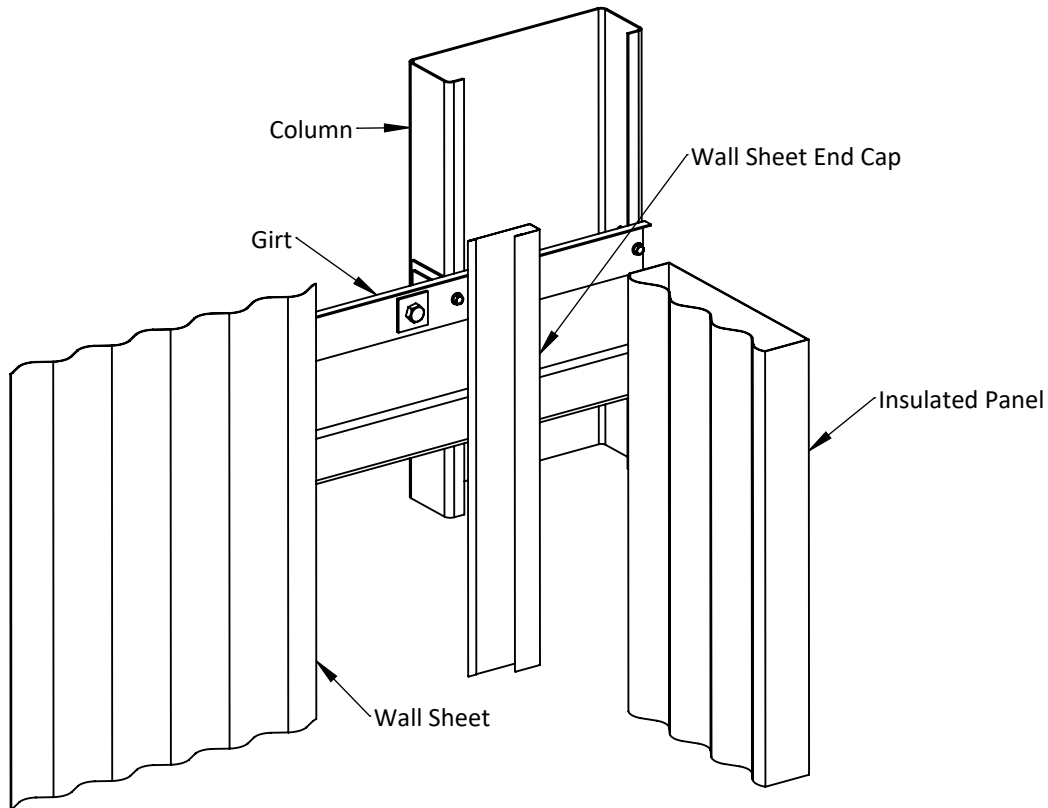
Powered by dm3Solutions.com

| | | | |
|--------------------|--------------------|----------------------|------------------------------------|
| ISSUE: 1 | SIZE: A4 | SCALE: NTS | DRAWING NUMBER: 27 of 34 |
|--------------------|--------------------|----------------------|------------------------------------|

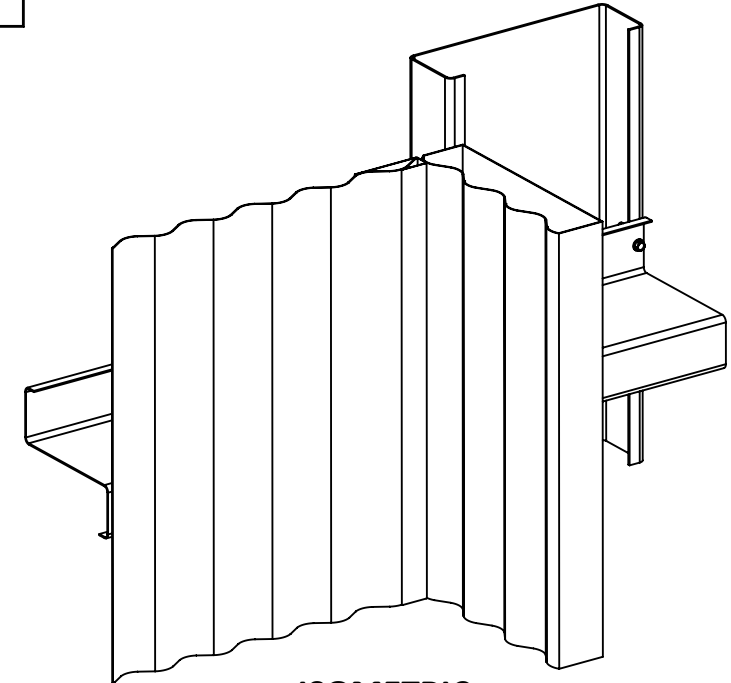
Detail GD5.33.2



PLAN



EXPLODED VIEW



ISOMETRIC



**PROFESSIONAL
CHOICE**
SHEDS AND CARPORTS

PROJECT:
Gable Shed & Awning

CLIENT:
John Bonham - 0432 379 252

ADDRESS:
388 Laverstock Road, Yass NSW 2582

PROJECT NUMBER:
10557

DRAWN BY:
dm3 Solutions

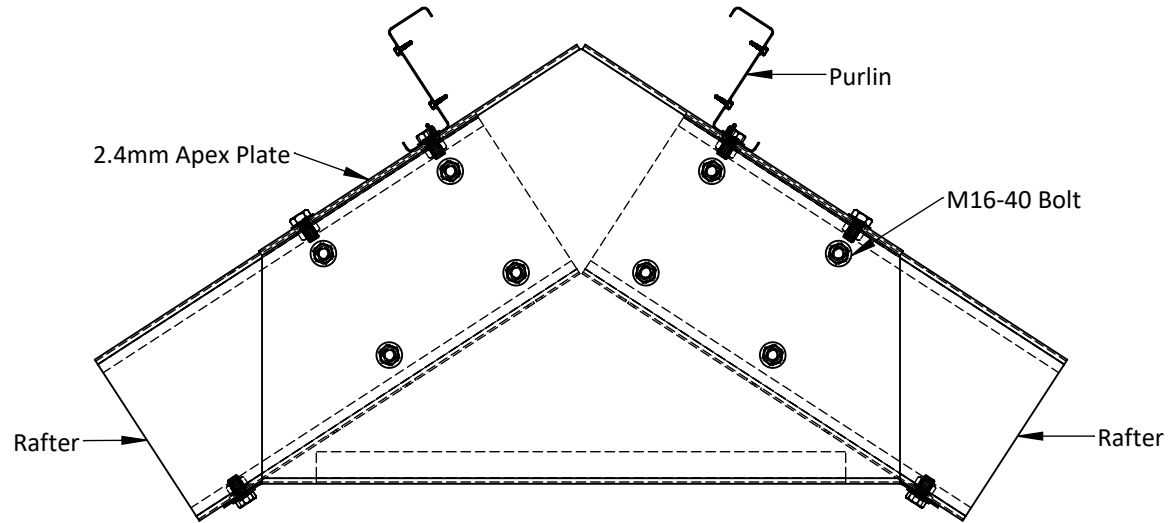
DRAWN DATE:
2024-11-15

© 2024 dm3 Solutions. The Information contained herein is Proprietary, Confidential and the Sole Property of dm3 Solutions. Reproduction in part or in whole is Prohibited without written approval. Unless specified otherwise, dimensions are in millimetres & drawings are not to scale.

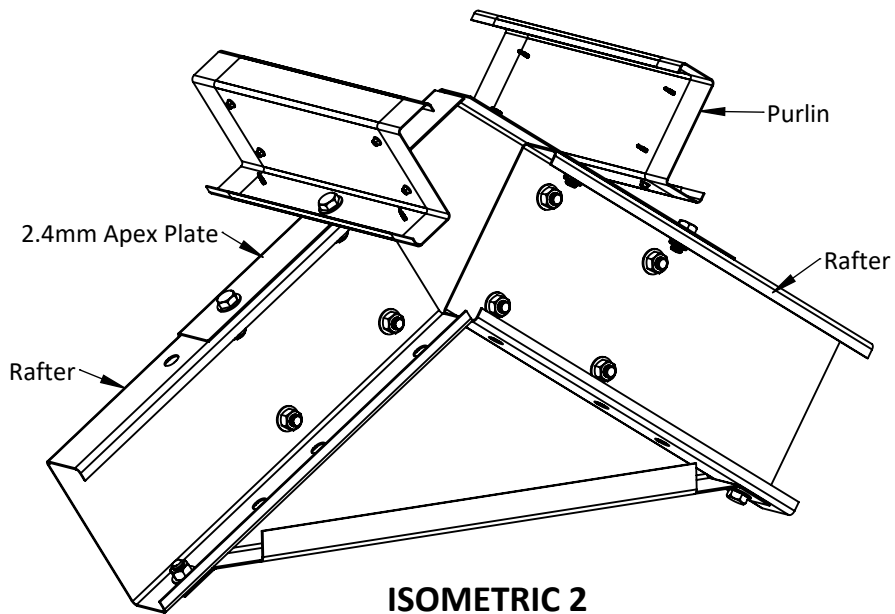
Powered by dm3Solutions.com

| | | | |
|--------------------|--------------------|----------------------|-----------------------------------|
| ISSUE: 1 | SIZE: A4 | SCALE: NTS | DRAWING NUMBER 28 of 34 |
|--------------------|--------------------|----------------------|-----------------------------------|

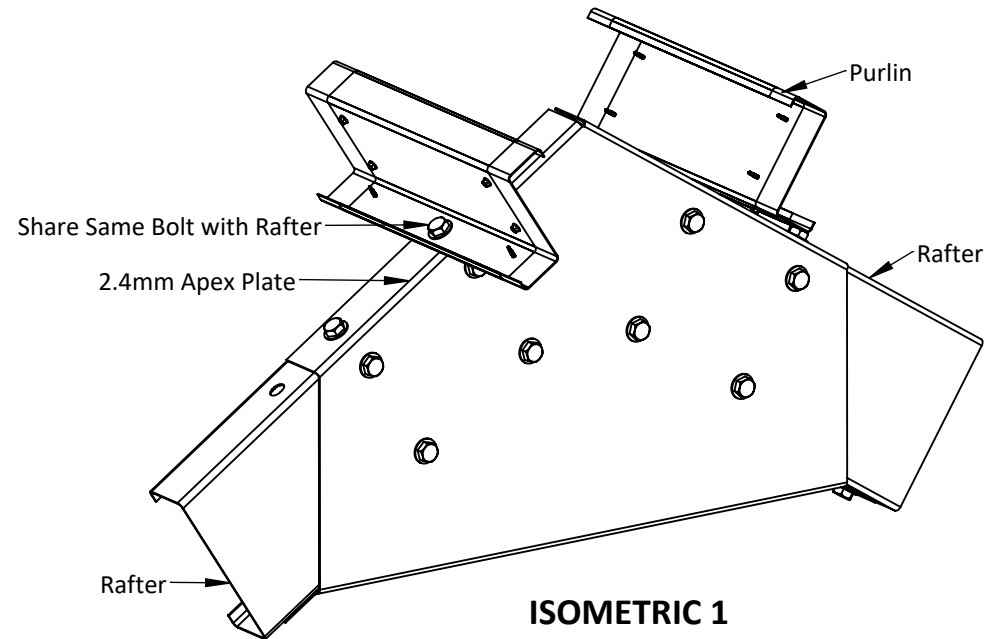
Detail GS2.10



ELEVATION



ISOMETRIC 2



ISOMETRIC 1



**PROFESSIONAL
CHOICE**
SHEDS AND CARPORTS

PROJECT:
Gable Shed & Awning

CLIENT:
John Bonham - 0432 379 252

ADDRESS:
388 Laverstock Road, Yass NSW 2582

PROJECT NUMBER:
10557

DRAWN BY:
dm3 Solutions

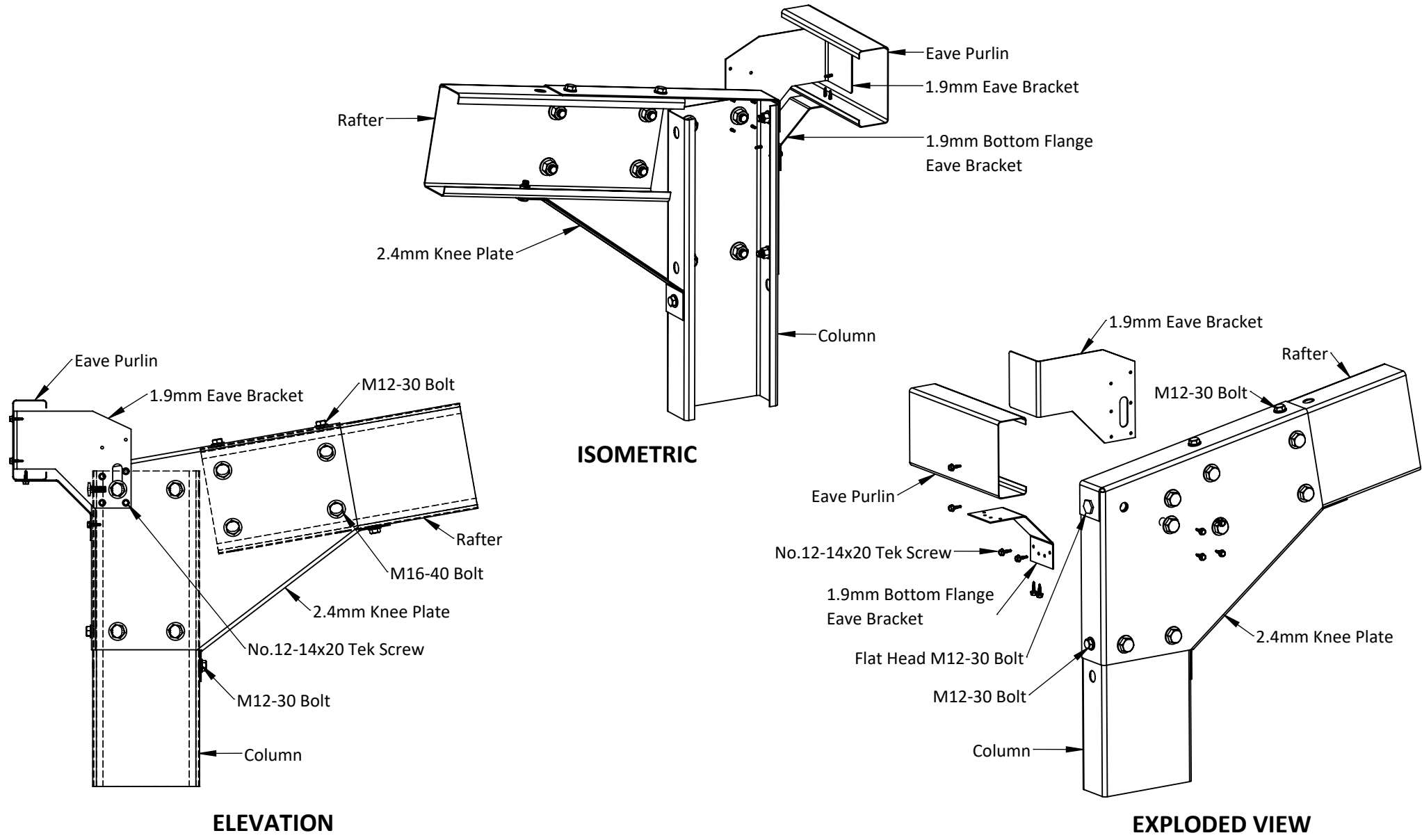
DRAWN DATE:
2024-11-15

© 2024 dm3 Solutions. The Information contained herein is Proprietary, Confidential and the Sole Property of dm3 Solutions. Reproduction in part or in whole is Prohibited without written approval. Unless specified otherwise, dimensions are in millimetres & drawings are not to scale.

[Powered by dm3Solutions.com](https://dm3solutions.com)

| | | | |
|--------------------|--------------------|----------------------|-----------------------------------|
| ISSUE: 1 | SIZE: A4 | SCALE: NTS | DRAWING NUMBER 29 of 34 |
|--------------------|--------------------|----------------------|-----------------------------------|

Detail GS2.33



ELEVATION

ISOMETRIC

EXPLODED VIEW

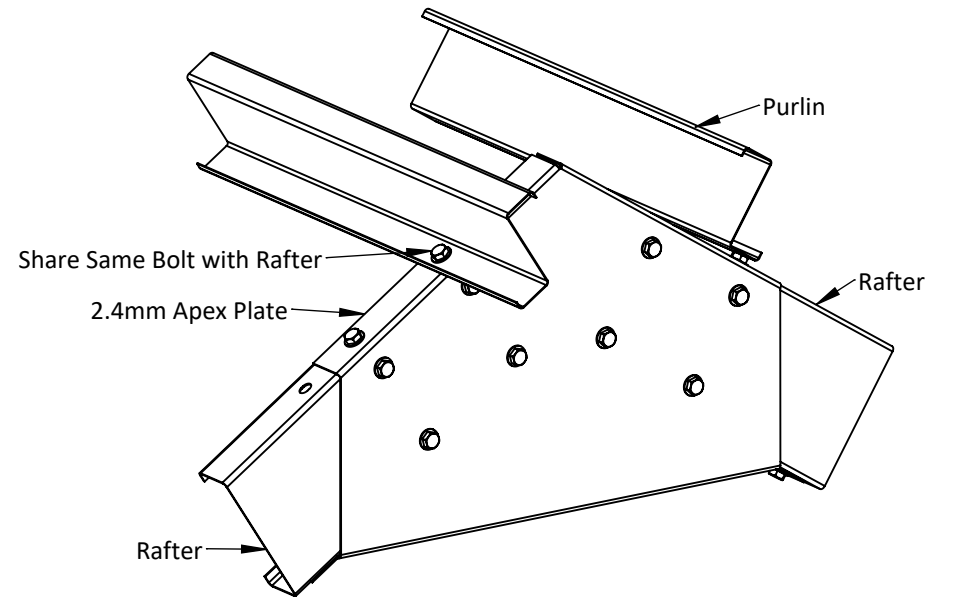
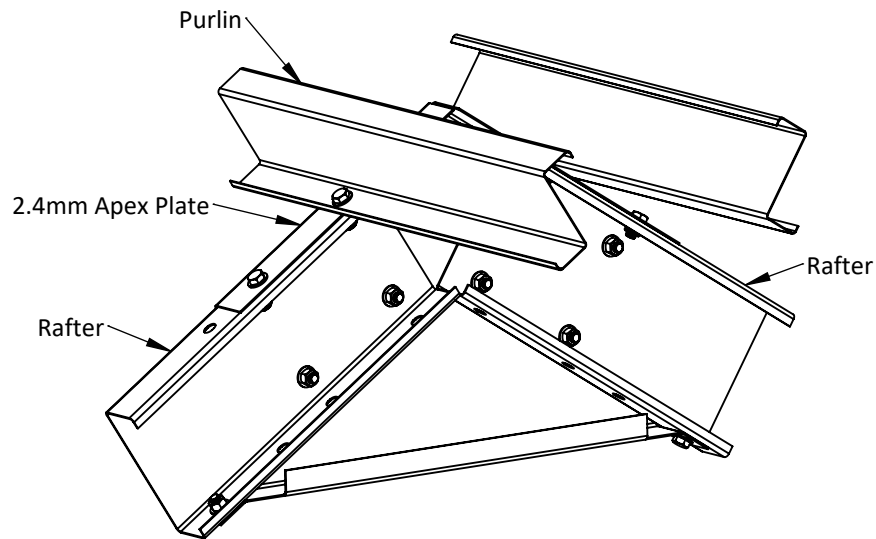
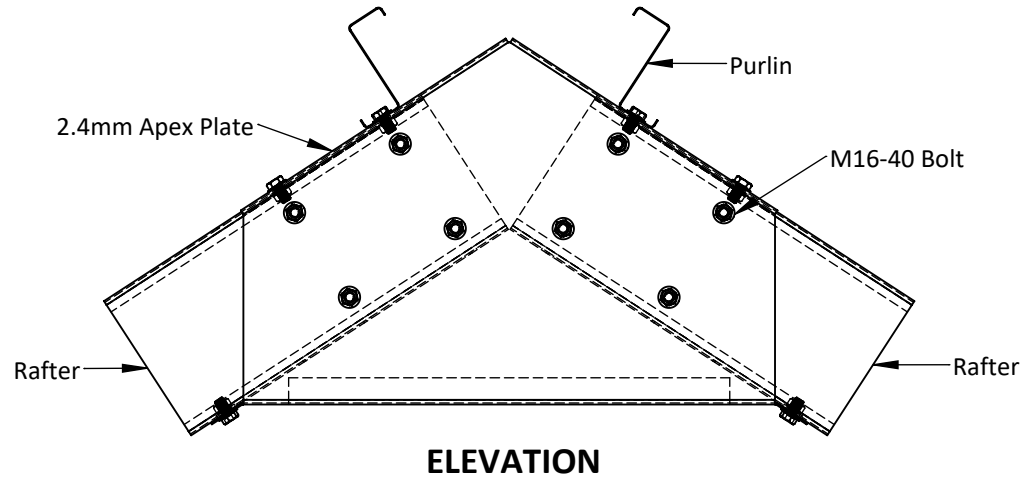


| | |
|----------|------------------------------------|
| PROJECT: | Gable Shed & Awning |
| CLIENT: | John Bonham - 0432 379 252 |
| ADDRESS: | 388 Laverstock Road, Yass NSW 2582 |

| | |
|-----------------|---------------|
| PROJECT NUMBER: | 10557 |
| DRAWN BY: | dm3 Solutions |
| DRAWN DATE: | 2024-11-15 |

| | | | |
|---|-------|--------|----------------|
| © 2024 dm3 Solutions. The Information contained herein is Proprietary, Confidential and the Sole Property of dm3 Solutions. Reproduction in part or in whole is Prohibited without written approval. Unless specified otherwise, dimensions are in millimetres & drawings are not to scale. | | | |
| Powered by dm3Solutions.com | | | |
| ISSUE: | SIZE: | SCALE: | DRAWING NUMBER |
| 1 | A4 | NTS | 30 of 34 |

Detail GS2.40



**PROFESSIONAL
CHOICE**
SHEDS AND CARPORTS

PROJECT:
Gable Shed & Awning

CLIENT:
John Bonham - 0432 379 252

ADDRESS:
388 Laverstock Road, Yass NSW 2582

PROJECT NUMBER:
10557

DRAWN BY:
dm3 Solutions

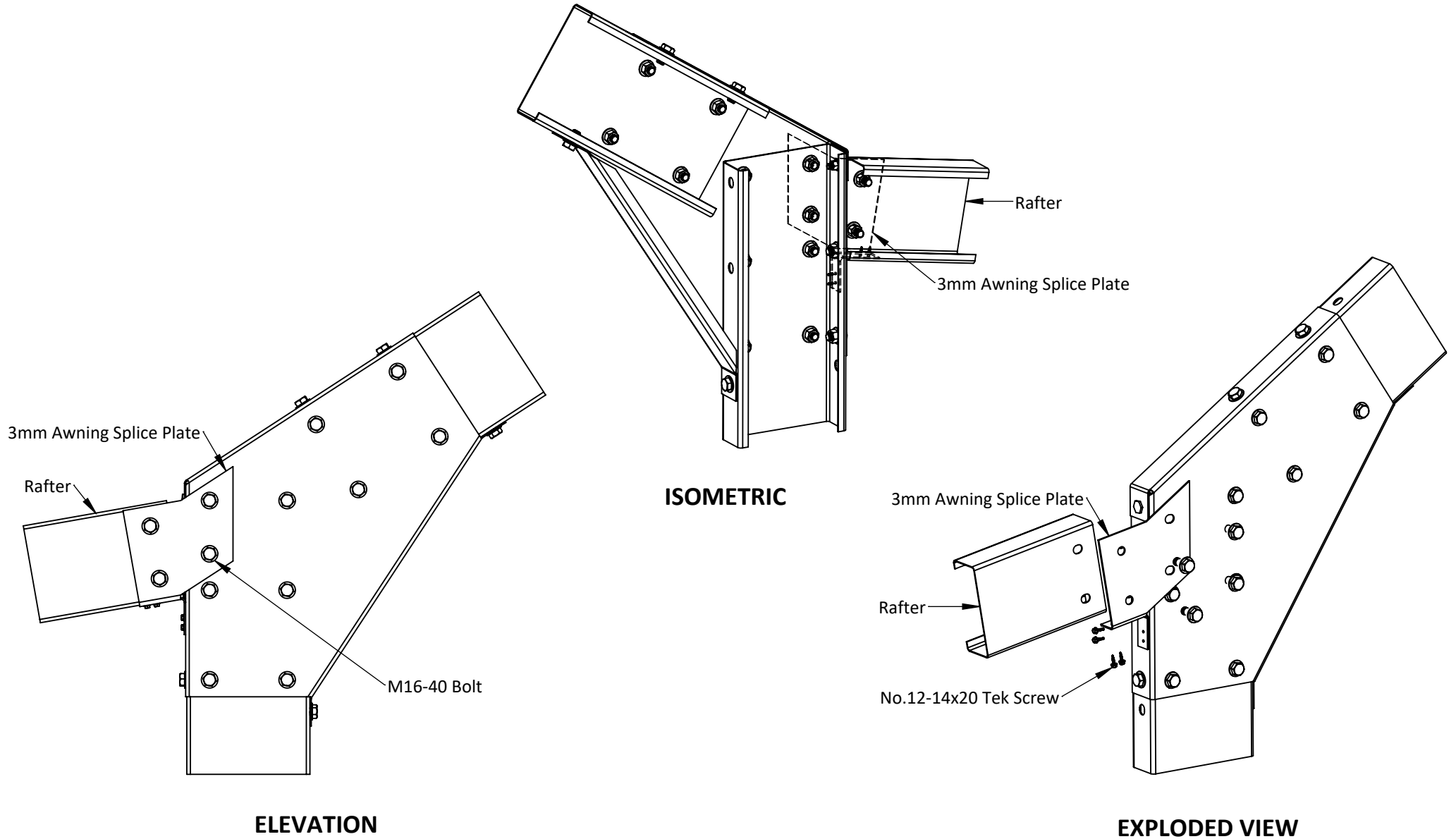
DRAWN DATE:
2024-11-15

© 2024 dm3 Solutions. The Information contained herein is Proprietary, Confidential and the Sole Property of dm3 Solutions. Reproduction in part or in whole is Prohibited without written approval. Unless specified otherwise, dimensions are in millimetres & drawings are not to scale.

Powered by dm3solutions.com

| | | | |
|--------------------|--------------------|----------------------|------------------------------------|
| ISSUE: 1 | SIZE: A4 | SCALE: NTS | DRAWING NUMBER: 31 of 34 |
|--------------------|--------------------|----------------------|------------------------------------|

Detail AWN2.12



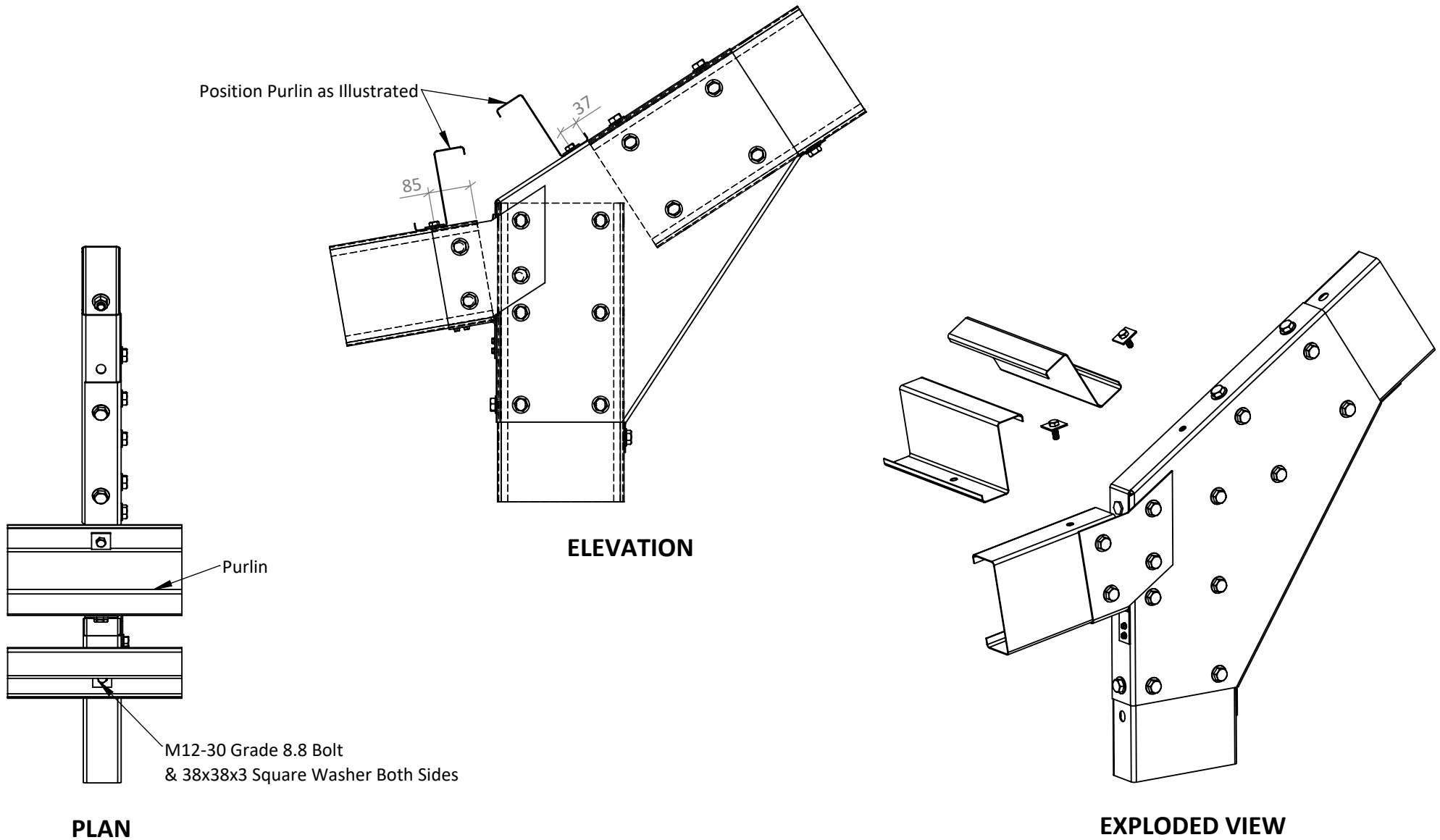
PROFESSIONAL CHOICE
SHEDS AND CARPORTS

| | |
|----------|------------------------------------|
| PROJECT: | Gable Shed & Awning |
| CLIENT: | John Bonham - 0432 379 252 |
| ADDRESS: | 388 Laverstock Road, Yass NSW 2582 |

| | |
|-----------------|---------------|
| PROJECT NUMBER: | 10557 |
| DRAWN BY: | dm3 Solutions |
| DRAWN DATE: | 2024-11-15 |

| | | | |
|---|-------|--------|----------------|
| © 2024 dm3 Solutions. The Information contained herein is Proprietary, Confidential and the Sole Property of dm3 Solutions. Reproduction in part or in whole is Prohibited without written approval. Unless specified otherwise, dimensions are in millimetres & drawings are not to scale. | | | |
| Powered by dm3Solutions.com | | | |
| ISSUE: | SIZE: | SCALE: | DRAWING NUMBER |
| 1 | A4 | NTS | 32 of 34 |

Detail AWN3.2



**PROFESSIONAL
CHOICE**
SHEDS AND CARPORTS

PROJECT:
Gable Shed & Awning

CLIENT:
John Bonham - 0432 379 252

ADDRESS:
388 Laverstock Road, Yass NSW 2582

PROJECT NUMBER:
10557

DRAWN BY:
dm3 Solutions

DRAWN DATE:
2024-11-15

© 2024 dm3 Solutions. The Information contained herein is Proprietary, Confidential and the Sole Property of dm3 Solutions. Reproduction in part or in whole is Prohibited without written approval. Unless specified otherwise, dimensions are in millimetres & drawings are not to scale.

[Powered by dm3Solutions.com](https://dm3Solutions.com)

| | | | |
|--------------------|--------------------|----------------------|------------------------------------|
| ISSUE: 1 | SIZE: A4 | SCALE: NTS | DRAWING NUMBER: 33 of 34 |
|--------------------|--------------------|----------------------|------------------------------------|

| Technical Data | | | | Cladding Details | |
|---|---|---|---|--------------------------------------|---------------------------------------|
| Class | 10a · Importance Level 2 | Member Capacity | 8.290 kN/m · min(Inward, Outward) Source: Lysaght® & Stramit® Span Tables | Roof Cladding | By Others |
| Region | A1-5 · Regional Wind Speed 45 m/s | Member ØM | 26.285 kNm · L _{ex} 3649 · L _{ey} 900 · L _{ez} 3649 | Wall Cladding | BlueScope® Zinalume® |
| Terrain Category | 2 | Deflection Actual | 3.1 mm | Min Yield Stress · Grade | 550 MPa · G550 |
| Shielding | No | Permitted | 12.2 mm · Span/300 · 1170.0 Table C1 | Profile | CustomOrb® |
| Wind Speed Requirements · AS/NZS 1170.2 | | Column · Member | C25024 with 1 row of Bridging | BMT | 0.48 mm |
| V _{design} | 40.95 m/s · 147 km/h | Min Yield Stress · Grade · I _x | 450 MPa · G450 · 9.62 x 10⁶mm⁴ | Awning Portal · Bored Piers | |
| | V _R x M _c x M _d x (M _{z,cat} x M _s x M _t) | Gov Span · Load Width | 2290 mm · 3500 mm | ØM M _u | 1.440 kNm |
| | 45 x 1 x 1 x (0.91 x 1 x 1) | Base Connection | Fixed · G450 Embedded Plate | Uplift V _u | 5.056 kN |
| V _{service} | 33.67 m/s · 121 km/h | Capacity Required | 2.814 kN/m (0.804 kPa x 3.500 m) | Shear H _u | 3.166 kN |
| | V ₂₅ x M _c x M _d x (M _{z,cat} x M _s x M _t) | Member Capacity | 20.960 kN/m · min(Inward, Outward) Source: Lysaght® & Stramit® Span Tables | Dimensions Pier Only | 350 mm diameter x 800 mm deep |
| | 37 x 1 x 1 x (0.91 x 1 x 1) | Member ØM | 26.285 kNm · L _{ex} 2290 · L _{ey} 2290 · L _{ez} 2290 | Pier with Slab | 350 mm diameter x 600 mm deep |
| | | Deflection Top of Column | 1.7 mm | Internal Portal · Bored Piers | |
| Load Requirements · Roof · AS/NZS 1170.0, 1170.1 & 1170.2 | | Permitted | 6.0 mm · Span/300 · 1170.0 Table C1 | ØM M _u | 2.907 kNm |
| Pressure _{major} | Inward: 0.893 kPa Outward: 0.704 kPa | Purlins | | Uplift V _u | 8.090 kN |
| Pressure _{minor} | Inward: 1.038 kPa Outward: 1.110 kPa | Member | Z15012 | Shear H _u | 5.056 kN |
| Service _{major} | Inward: 0.735 kPa Outward: 0.389 kPa | Min Yield Stress · Grade · I _x | 500 MPa · G500 · 1.47 x 10⁶mm⁴ | Dimensions Pier Only | 450 mm diameter x 1200 mm deep |
| Service _{minor} | Inward: 0.818 kPa Outward: 0.663 kPa | Gov Span · Load Width | 3315 mm · 900 mm | Pier with Slab | 450 mm diameter x 600 mm deep |
| Load Requirements · Walls · AS/NZS 1170.0, 1170.1 & 1170.2 | | Capacity Required Inward | 0.934 kN/m (1.038 kPa x 0.900 m) | | |
| Pressure _{major} | Inward: 0.804 kPa Outward: 0.684 kPa | Outward | 0.999 kN/m (1.110 kPa x 0.900 m) | | |
| Pressure _{minor} | Inward: 1.086 kPa Outward: 1.207 kPa | Member Capacity | 4.220 kN/m · 2 Lapped Spans · min(Inward, Outward) · Source: Lysaght® & Stramit® Span Tables | | |
| Service _{major} | Inward: 0.544 kPa Outward: 0.463 kPa | Deflection Actual | 3.9 mm | | |
| Service _{minor} | Inward: 0.734 kPa Outward: 0.816 kPa | Permitted | 11.1 mm · Span/300 · 1170.0 Table C1 | | |
| Awning Frame | | Eave Purlins | | | |
| Knee Connection | Moment Resistant · G450 Plate | Member | C15012 | | |
| ØM Required | 5.501 kNm | Min Yield Stress · Grade · I _x | 500 MPa · G500 · 1.29 x 10⁶mm⁴ | | |
| Rafter · Member | C20019 | Gov Span · Load Width | 3315 mm · 450 mm | | |
| Min Yield Stress · Grade · I _x | 450 MPa · G450 · 4.51 x 10⁶mm⁴ | Capacity Required Inward | 0.467 kN/m (1.038 kPa x 0.450 m) | | |
| Gov Span · Load Width | 2405 mm · 3500 mm | Outward | 0.500 kN/m (1.110 kPa x 0.450 m) | | |
| Capacity Required | 7.609 kN/m (2.174 kPa x 3.500 m) | Member Capacity | 1.700 kN/m · min(Inward, Outward) · Source: Lysaght® & Stramit® Span Tables | | |
| Member Capacity | 10.56 kN/m · min(Inward, Outward) Source: Lysaght® & Stramit® Span Tables | Deflection Actual | 2.2 mm | | |
| Member ØM | 14.823 kNm · L _{ex} 2405 · L _{ey} 900 · L _{ez} 2405 | Permitted | 11.1 mm · Span/300 · 1170.0 Table C1 | | |
| Deflection Actual | 0.2 mm | Girts | | | |
| Permitted | 8.02 mm · Span/300 · 1170.0 Table C1 | Member | Z15012 | | |
| Column · Member | C20019 | Min Yield Stress · Grade · I _x | 500 MPa · G500 · 1.47 x 10⁶mm⁴ | | |
| Min Yield Stress · Grade · I _x | 450 MPa · G450 · 4.51 x 10⁶mm⁴ | Gov Span · Load Width | 3500 mm · 1157 mm | | |
| Gov Span · Load Width | 1800 mm · 3500 mm | Capacity Required Inward | 1.396 kN/m (1.207 kPa x 1.157 m) | | |
| Base Connection | Fixed · G450 Embedded Plate | Outward | 1.257 kN/m (1.086 kPa x 1.157 m) | | |
| Capacity Required | 2.814 kN/m (0.804 kPa x 3.500 m) | Member Capacity | 4.220 kN/m · 2 Lapped Spans · min(Inward, Outward) · Source: Lysaght® & Stramit® Span Tables | | |
| Member Capacity | 10.560 kN/m · min(Inward, Outward) Source: Lysaght® & Stramit® Span Tables | Lateral Bracing | | | |
| Member ØM | 14.823 kNm · L _{ex} 1800 · L _{ey} 1200 · L _{ez} 1800 | Front Wall Required | 8.255 kN | | |
| Deflection Top of Column | 1.8 mm | Actual | 9.339 kN | | |
| Permitted | 6.0 mm · Span/300 · 1170.0 Table C1 | Back Wall Required | 8.255 kN | | |
| Internal Portal | | Actual | 9.339 kN | | |
| Knee Connection | Moment Resistant · G450 Plate | | | | |
| ØM Required | 15.555 kNm | | | | |
| Rafter · Member | C25024 with 1 row of Bridging | | | | |
| Min Yield Stress · Grade · I _x | 450 MPa · G450 · 9.62 x 10⁶mm⁴ | | | | |
| Gov Span · Load Width | 3649 mm · 3500 mm | | | | |
| Capacity Required | 3.616 kN/m (1.033 kPa x 3.500 m) | | | | |



PROJECT: Gable Shed & Awning

CLIENT: John Bonham - 0432 379 252

ADDRESS: 388 Laverstock Road, Yass NSW 2582

PROJECT NUMBER: 10557

DRAWN BY: dm3 Solutions

DRAWN DATE: 2024-11-15

© 2024 dm3 Solutions. The Information contained herein is Proprietary, Confidential and the Sole Property of dm3 Solutions. Reproduction in part or in whole is Prohibited without written approval. Unless specified otherwise, dimensions are in millimetres & drawings are not to scale.

Powered by [dm3Solutions.com](https://dm3solutions.com)

| | | | |
|----------|----------|------------|--------------------------|
| ISSUE: 1 | SIZE: A4 | SCALE: NTS | DRAWING NUMBER: 34 of 34 |
|----------|----------|------------|--------------------------|