

NOTES:

- 1.01.1 Member to be installed for location of numbers. 10.2.2.1 Member to be installed for location of numbers. 10.2.2.2 Member to be installed for location of numbers.
- 1.02.1 Member to be installed for location of numbers. 10.2.2.1 Member to be installed for location of numbers. 10.2.2.2 Member to be installed for location of numbers.
- 2.01.1 Member to be installed for location of numbers. 10.2.2.1 Member to be installed for location of numbers. 10.2.2.2 Member to be installed for location of numbers.
- 3.01.1 Member to be installed for location of numbers. 10.2.2.1 Member to be installed for location of numbers. 10.2.2.2 Member to be installed for location of numbers.
- 4.01.1 Member to be installed for location of numbers. 10.2.2.1 Member to be installed for location of numbers. 10.2.2.2 Member to be installed for location of numbers.
- 5.01.1 Member to be installed for location of numbers. 10.2.2.1 Member to be installed for location of numbers. 10.2.2.2 Member to be installed for location of numbers.
- 6.01.1 Member to be installed for location of numbers. 10.2.2.1 Member to be installed for location of numbers. 10.2.2.2 Member to be installed for location of numbers.
- 7.01.1 Member to be installed for location of numbers. 10.2.2.1 Member to be installed for location of numbers. 10.2.2.2 Member to be installed for location of numbers.
- 8.01.1 Member to be installed for location of numbers. 10.2.2.1 Member to be installed for location of numbers. 10.2.2.2 Member to be installed for location of numbers.
- 9.01.1 Member to be installed for location of numbers. 10.2.2.1 Member to be installed for location of numbers. 10.2.2.2 Member to be installed for location of numbers.
- 10.01.1 Member to be installed for location of numbers. 10.2.2.1 Member to be installed for location of numbers. 10.2.2.2 Member to be installed for location of numbers.
- 11.01.1 Member to be installed for location of numbers. 10.2.2.1 Member to be installed for location of numbers. 10.2.2.2 Member to be installed for location of numbers.
- 12.01.1 Member to be installed for location of numbers. 10.2.2.1 Member to be installed for location of numbers. 10.2.2.2 Member to be installed for location of numbers.
- 13.01.1 Member to be installed for location of numbers. 10.2.2.1 Member to be installed for location of numbers. 10.2.2.2 Member to be installed for location of numbers.
- 14.01.1 Member to be installed for location of numbers. 10.2.2.1 Member to be installed for location of numbers. 10.2.2.2 Member to be installed for location of numbers.
- 15.01.1 Member to be installed for location of numbers. 10.2.2.1 Member to be installed for location of numbers. 10.2.2.2 Member to be installed for location of numbers.
- 16.01.1 Member to be installed for location of numbers. 10.2.2.1 Member to be installed for location of numbers. 10.2.2.2 Member to be installed for location of numbers.
- 17.01.1 Member to be installed for location of numbers. 10.2.2.1 Member to be installed for location of numbers. 10.2.2.2 Member to be installed for location of numbers.
- 18.01.1 Member to be installed for location of numbers. 10.2.2.1 Member to be installed for location of numbers. 10.2.2.2 Member to be installed for location of numbers.
- 19.01.1 Member to be installed for location of numbers. 10.2.2.1 Member to be installed for location of numbers. 10.2.2.2 Member to be installed for location of numbers.
- 20.01.1 Member to be installed for location of numbers. 10.2.2.1 Member to be installed for location of numbers. 10.2.2.2 Member to be installed for location of numbers.

ABBREVIATIONS:

- NEL: NATURAL GROUND LEVEL
- REL: RELATIVE LEVEL
- FLL: FINISHED FLOOR LEVEL
- FCL: FINISHED CEILING LEVEL
- LFL: UPPER FLOOR LEVEL
- UCL: UPPER CEILING LEVEL
- AW: AWNING WINDOW
- FW: FIXED WINDOW
- SW: SLIDING WINDOW
- BW: BIFOLD WINDOW
- SD: SLIDING DOOR
- STO: STACKED DOOR
- BD: BIFOLD DOOR
- DP: DOWNPIPE
- SP: SPRINGER
- PPOS: PRINCIPAL PRIVATE OPEN SPACE
- POS: PRIVATE OPEN SPACE
- CSD FJ: CSD FLUSH JAMB

10.2.1 Member to be installed for location of numbers. 10.2.2.1 Member to be installed for location of numbers. 10.2.2.2 Member to be installed for location of numbers.

10.2.1 Member to be installed for location of numbers. 10.2.2.1 Member to be installed for location of numbers. 10.2.2.2 Member to be installed for location of numbers.

10.2.1 Member to be installed for location of numbers. 10.2.2.1 Member to be installed for location of numbers. 10.2.2.2 Member to be installed for location of numbers.

10.2.1 Member to be installed for location of numbers. 10.2.2.1 Member to be installed for location of numbers. 10.2.2.2 Member to be installed for location of numbers.

10.2.1 Member to be installed for location of numbers. 10.2.2.1 Member to be installed for location of numbers. 10.2.2.2 Member to be installed for location of numbers.

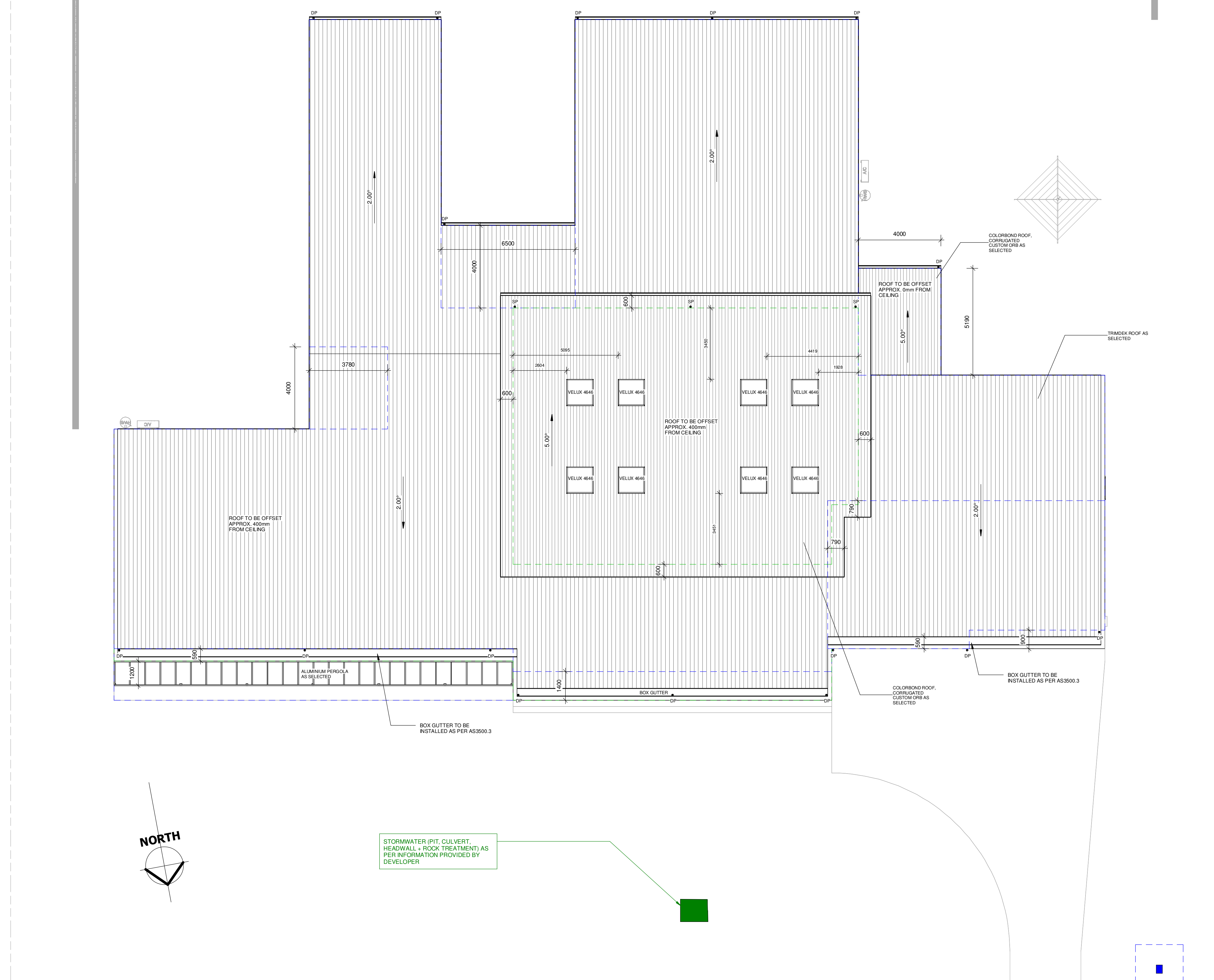
10.2.1 Member to be installed for location of numbers. 10.2.2.1 Member to be installed for location of numbers. 10.2.2.2 Member to be installed for location of numbers.

10.2.1 Member to be installed for location of numbers. 10.2.2.1 Member to be installed for location of numbers. 10.2.2.2 Member to be installed for location of numbers.

10.2.1 Member to be installed for location of numbers. 10.2.2.1 Member to be installed for location of numbers. 10.2.2.2 Member to be installed for location of numbers.

10.2.1 Member to be installed for location of numbers. 10.2.2.1 Member to be installed for location of numbers. 10.2.2.2 Member to be installed for location of numbers.

10.2.1 Member to be installed for location of numbers. 10.2.2.1 Member to be installed for location of numbers. 10.2.2.2 Member to be installed for location of numbers.



STORMWATER (PIT, CULVERT, HEADWALL + ROCK TREATMENT) AS PER INFORMATION PROVIDED BY DEVELOPER

STORMWATER DRIVEWAY CULVERT AS PER INFORMATION PROVIDED BY DEVELOPER

ROOF PLAN
1 : 100

FOR CONSTRUCTION

STUDIO 56
Building Design, Architectural Illustrations, BASIX & Energy Ratings
PH: 02 6280 4167
E: info@studio56.com.au
W: studio56.com.au

© COPYRIGHT Studio56
THIS PLAN REMAINS THE PROPERTY OF Studio56 & MAY NOT BE COPIED IN WHOLE OR IN PART WITHOUT WRITTEN PERMISSION. FAILURE TO DO SO WILL RESULT IN LEGAL ACTION

bdca
BUILDING DESIGNERS ASSOCIATION OF AUSTRALIA

MASTER BUILDERS ASSOCIATION

Client Name: EDUARDO FLORES
Project: PROPOSED RESIDENCE
Address: LOT 68 SUTTON DP 271494
14 GUISE STREET, SUTTON NSW 2620

Sheet Name: ROOF PLAN
Project number: 5377-A
Date: 22.10.2024
Drawn by: STUDIO56

Scale: @A1
1 : 100
Design by: STUDIO56
Sheet Number: 104
Rev No